

# ANNUAL REPORT

# SCOLEL'TE 2019

ELSA ESQUIVEL  
SOTERO QUECHULPA  
RUBÉN TRUJILLO  
HELENA BARONA

FOTO: MARK LOCKI

MÉXICO

scolet'e  
el árbol que crece



Plan Vivo

# Scolecote

## 2019 Annual Report

### **Summary**

Section A: Project Updates  
Section B: Project Activities  
Section C: Issuance of Plan Vivo Certificates  
Section D: Sales of Plan Vivo Certificates  
Section E: Monitoring Results  
Section F: Impacts  
Section G: Payments for Ecosystem Services  
Section H: Participation  
Section I: Operative Costs

### **Annexes**

# Scole'te

## Annual Report 2019

Report authors: Elsa Esquivel, Ruben Trujillo, Helena Barona y Sotero Quechulpa

Submission dat: May 2020

### Summary

Project overview			
Reporting period	01.01.2019–31.12.2019		
Project location	Chiapas, Mexico		
Technical specifications in use	Sistema de Mejoramiento de café tropical (AF-CAFE-TRO1) Sistema Taungya (AF-TAUG-TRO1). Sistema de Acahual mejorado tropical (FOR-ACME-TRO1) Sistema Restauración forestal (FOR-REST-SUBT1)		
Project indicators	Historic (1997-2018)	For the current period (2019)	Total
Number of participating households with PES agreements	1394	28	1,422
Number of community groups with PES agreements (if applicable)	9	3	12
Estimated number of households (or individuals) in community groups	<b>1240</b>	<b>378</b>	1618
Area under management with PES agreements	9150.75	282.8	9,433.55
Total amount of PES payments to participants (USD)	\$690,752.11	34,914.06	725,666.17
Amount (USD) in trust funds for future PES payments	327,651.63		
Current project stock (PVC)	0		
Plan Vivo Certificates issued to date	550,331		
Plan Vivo Certificates (PVC) requested for emission	<b>65,902</b>		
Total amount of PVC issued to date (including the current submission)	616,233		

[Escriba aquí]

## Section A: Project Updates

### A1 Main events

#### Implementation of the Community Forest Protocol.

The AMBIO Cooperative joined forces with the US FOREST SERVICE, the GEF- CI and Ecometrica, for the elaboration of a “Community Forest Protocol”.

This protocol seeks that the communities of the Ocote Biosphere Reserve be able to implement a monitoring instrument for timber and no timber products, which contributes to have knowledge and share information within the communities, for a better decision making, for designing strategies for the management of forest resources, the strengthen of internal governance and for the management of information compatible with national's information and for an easy replication.

Some of the communities participating with this Protocol, also participate in the Scolel'te Program. Part of the activities developed are focused on the community biodiversity in the Ocotre Jungle-Sumidero Cayon Complex.



#### Inventory of Wood in agroforestry systems of Scolel'té

In 2019 field work was carried out with communities of Scolel'te to determine the volumes, current condition and quality of the Wood of the old plots that have participated with the program for almost twenty years. Smallholders have been interview to learn about their experiences in the use of agroforestry systems, as well, to know their expectations about the Wood.

This study was developed in the first months of this year, with the support of four community technicians and a student of the Agroforestry Engineering Degree. Information was collected in eleven communities of the municipalities of: Chilón, Salto de Agua, Palenque and Maravilla Tenejapa. In total, there were up to forty sampling sites, in forty plots, with three types of agroforestry systems. The different established agroforestry systems produce wood, but its spatial arrangement allows the diversification of the productive system in uses and management.



#### Participation in the Forests 2020 Conference.

During the month of April, the "Forests 2020 Conference" was held in the city of Edinburgh, Scotland, where different experiences, advances and applications developed with the participating countries in the framework of the Forests 2020 Project were introduced. This is supported by the United Kingdom Space Agency, through its International Partners Program, and is led by Ecometrica.

The objective of the project is to improve forestry monitoring systems in partner countries, together with the Universities of Edinburgh, Leicester, Carbomap and partners, such as national and subnational governments, civil society organizations, consultants and research institutions.



AMBIO participated in the community monitoring panel, presenting experiences in Chiapas where the communities have been involved in monitoring their forests to improve local governance. Forests 2020 has focused on improving three areas of forest monitoring in particular: detecting forest changes, mapping deforestation risks and improving digital infrastructure through the Earth Observation Labs, so these maps can reach policy stakeholders for decision making and in an easy format.



### **Exchange for silvopastoral systems.**

The AMBIO Cooperative, in conjunction with the Sumidero Canyon National Park, the Fund for the Conservation El Triunfo and Ecology, Sustainability and Innovation (ESI), carried out an exchange of experiences in silvopastoral systems, called "From smallholder to smallholder", in "Los Ángeles" camp, inside the La Sepultura Biosphere Reserve, in the municipality of Villaflores.

The objective of the event was to present to the participants the experience of sustainable livestock that is found in this area, by the use of fodder trees, solar electric fences and improved pastures.



### **Final meeting for the CI-GEF “Mitigation for Climate Change Project”.**

During August, the closing meeting of the project “Maintenance and increase of carbon stores in agroforestry systems in rural communities of the Zoque Jungle–Sumidero Canyon Complex as a climate [Escriba aquí]

change mitigation strategy, Chiapas, Mexico”, was carried out and it were presented the results, actions for sustainability and lessons learned. This project was implemented by the AMBIO Cooperative, through the support of Conservation International (CI).

The compliance the carbon sequestration goals were achieved through the Scolel’te. Likewise, a regional system of social safeguards was developed and implemented, as well as the strengthen of the gender perspective issue was addressed at the institutional level, between partners and communities. The Complex has a high value as a forest biological corridor, so the project had a high participation, communication and coordination of the implementation actions, which was essential for the good results of the proposal.



### Visit of the panel of experts of the Mexican Carbon Standard

The AMBIO Cooperative was visited by the working group that develops the methodologies for the registration of carbon forest projects and the certification of the increase of carbon stocks, with the use of the Mexican Carbon Standard NMX-AA-173-SCFI-2015. This work is funded by the National Forestry Commission (CONAFOR) and the National Science and Technology Council (CONACYT).

The purpose of the visit was to learn about the methodologies that are used by various international standards, such as the Plan Vivo Standard, which is used in the mexican and international market. This work has the purpose of advancing in the establishment of the criteria and the methodology that allows to evaluate the adaptability of other standards, as well as development of the methodologies for the NMX-173. **Plan Vivo’s Annual Meeting.**

The Plan Vivo Standard held its Annual Meeting, with the participation of different stakeholders, such as: registered projects (such as Scolel’te), technical experts, researchers, as well as buyers. The meeting was held at the Carbon Innovation Center at the University of Edingburg, Scotland.

The meeting's agenda took into account the various climate negotiations that are taking place worldwide, such as the Paris Agreement and the countries' compliance scenarios. The idea was to carry out an analysis of the lessons learned over the 20 years of experience of the Standard on the community-based approach to natural resource management and the various forms of incorporation that are present in this new climate scenario.

Among the general conclusions, the growing world demand in the search for carbon projects with a landscape approach stands out, which has put Plan Vivo Projects in the interest of buyers. Possible post-2020 market scenarios were also analyzed, as well as project escalation



[Escriba aquí]

mechanisms, financing solutions to climate change, as well as metrics and technology that can be used to measure impacts, to report the work. carried out by projects.

## A2 Achievements and challenges

### Achievements

A) ) **Participation in Councils and Collaboration with State and Federal Agencies.** As part of the support, monitoring and different activities developed in the sites where the project work, Ambio participates in 5 CONANP's Technical Advisory Councils. The participation in the councils allows the strengthening of the work with the communities, in a coordinated way, as well as, helps to influenciate some of the actions that can improve the impacts in the territory in a comprehensive way.

B) **Biodiversity Monitoring.** In 2019, work began with the Community Forest Protocol (jointly implemented by the AMBIO Cooperative and the US Forest Service) for the monitoring of biodiversity, specifically for land mammals, through the establishment of camera traps in the Reserve of the El Ocoté Biosphere (REBISO). This work is carried out with the collaboration of the Reserve's communities, in such a way that it allows them to acquire knowledge about the methodology for monitoring biodiversity and expand the information on the species present. In this project participate communities registered in Scolel'te and they have achived to monitor the next species las *siguientes especies*: Ocelot (*Leopardus pardalis*), Coati (*Nasua narica*), Grisón (*Galictis Vittata*), Peccary (*Pecari tajacu*), Tyrant eagle (*Spizaetus tyrannus*), un Puma (*Puma concolor*), which are indicators of a healthy ecosystem.



Ocelot (*Leopardus pardalis*)



Grisón (*Galictis Vittata*)



Peccary (*Pecari tajacu*)

C) **Promotion of Scolel'te.** In addition to permanent promotion with social networks, website and monthly newsletters, the Scolel'te Program was present in different national and international forums, such as the Sustainable & Social Tourism Summit, the Annual Meeting of Plan Vivo , and in a workshop for Carbon Markets and REDD+ Type Projects for key stakeholders of the Government of Tabasco.

National sales have presented a significant increase derived from the implementation of the Emissions Trading System in Mexico, which is still under construction, but which has aroused the interest of companies and organizations at the national level to learn about mitigation mechanisms that exist in Mexico.

### Challenges

A) **Preliminary data of wood volumes in plots with more than 20 years of establishment.** The study

[Escriba aquí]

comprised a total of 38 plots, of which the following agroforestry systems were analyzed; Taungya Tropical System, with a quantity of 24 plots; Tropical Improved Fallow System, with 12 plots and finally the Tropical Coffee Timber, with 2 plots.

Good quality wood has been found, and with the possibility of being placed in the Legal Market, however, it is necessary to start the legal and technical procedure for feasibility. This is considered as a challenge, since many of the communities have not commercialized wood, for which it has been defined to make a gradual work plan to achieve it.

B) ***Sembrando Vida***: This was the first year of implementation of one of the core programs for the Federal Government, , *Sembrando Vida*. It was launched as a strategy to mitigate the poverty of agrarian subjects in 19 states of Mexico, among them Chiapas, in addition to seeking that producers establish agroforestry production systems, with the Milpa System and furis trees, with monthly support approximately \$225 UDS monthly for these activities.

In Chiapas, this program has represented a limitation for the growth of the Scole'te Program in tropical areas (which is where it has primarily been developed), since smallholders receive a high sum to participate. As Ambio has started to develop strategies that do not affect its growth, some of them include covering areas that the government initiative has not considered for the program and establishing alliances in other regions of the country that are not being considered in this social program.

C) ***Scole'te's Information Systemization***. One of the activities in the process of improvement in the program was the capture, analysis and systematization of the information, which is why the integration of the technology into the field data collection began, which we hope will allow faster delivery of information. It is planned for 2020, the training of the first group of community technicians in this new systems, so that it can be improved and adapted to reality.

### **A3 Project developments**

As previously mentioned, the way to insert new areas into the Scole'te Program has been analyzed, given the current conditions of the public policies in the country. One of the identified areas of opportunity is forest management zones, in Chiapas there are several communities that carry out forestry activities under a legal frame, in which it is often difficult to give adequate management, due to the weakness of the activity in the state, low prices, so this presents a opportunity for strengthenin their activities.

Reforestation (which comply with current technical specifications) have also been identified, which occurred a few years ago and that the smallholder hasn't have the resources to maintain the plantation. The proposal is to give them the proper management, to ensure the permanence of these plots, visualizing a legal use in the future.

Ambio has received the offer to support different regional and local organizations from different parts of the country to be integrated into the program and to launch initiatives with their support. In this sense, this has been considered as an option in which it is necessary to develop the migration of the strategy according to some activities and responsibilities, under previous agreements, so Ambio can have quality control of the implementation and operation of the program in different sites out of Chiapas.

## **Section B: Project Activities**

[Escriba aquí]



## B1. Project activities that generate Plan Vivo Certificates (PVC)

In 2019 there was a significant growth in the forest restoration system, which considers the reforestation and natural regeneration of degraded areas and / or affected by forest fires in temperate areas of the Sierra madre and the northern part of Chiapas. It should be noted that some of the ejidos carry out community forest management, so the fact of participating in Scolel'te, facilitates the maintenance of the areas, the management of silvicultural practices such as pruning and the accommodation of fuel to reduce fire risks forest.

As can be seen in figure 2, the restoration areas represent 77% of the total registered area. The restoration areas belong to ejidos or groups of organized smallholders. Some of them take advantage of resin. Due to this fact, the number of beneficiaries is higher



Natural regeneration area reforested after forest fires. Ejido Juan Sabines



Reforestation areas after forest fires. Ejido Juan Sabines

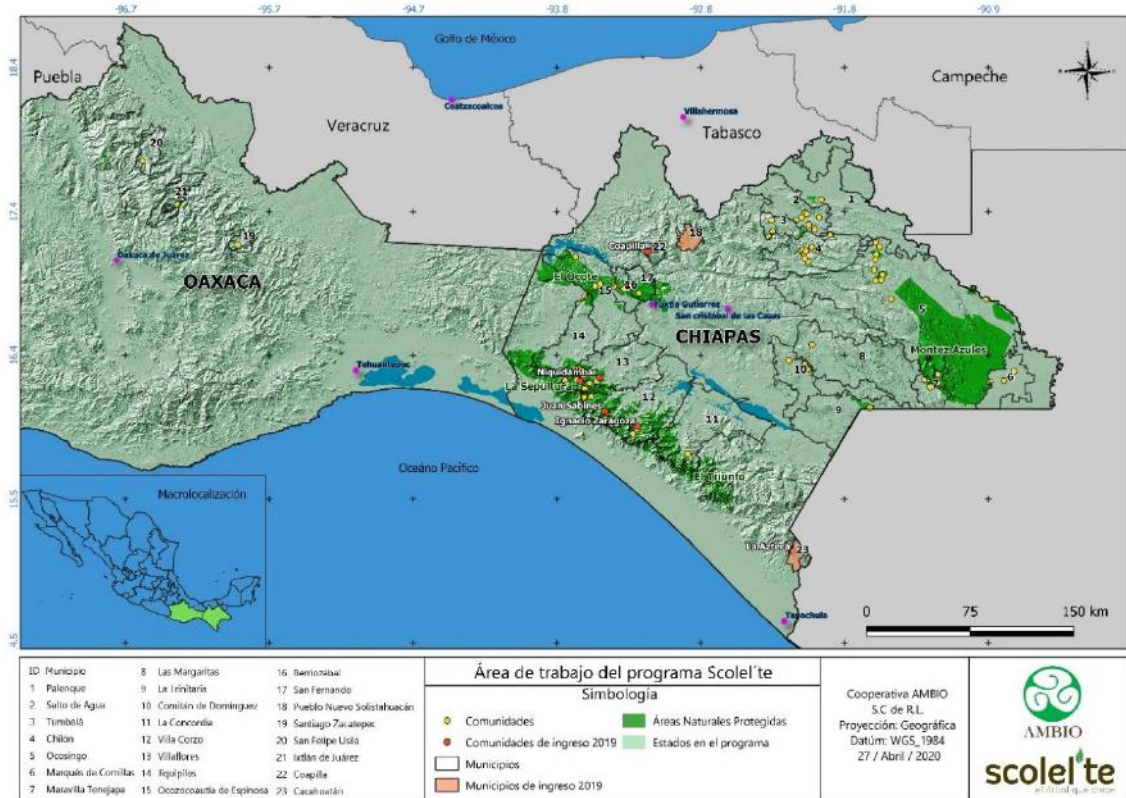


Reforestation activities. Ejido Juan Sabines

On the other hand, this year smallholders with the improved coffee timber systems, tropical improved fallow and taungya systems, from the Soconusco region were registered in Scolel'te.

[Escriba aquí]

Figure 2. Current incidence area of the Scolel'te Program



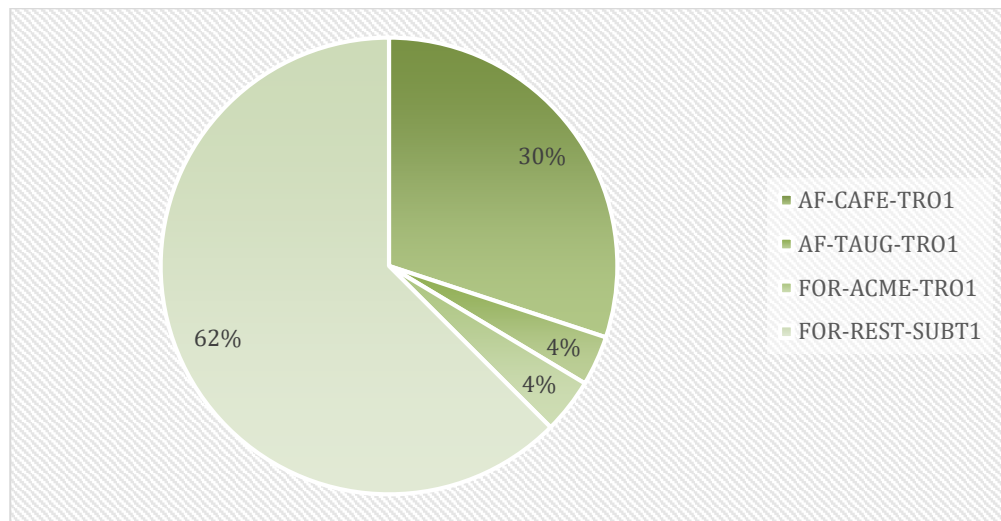
The following table describes the agroforestry systems established during 2019, the area and number of new smallholders and the increase in registered plots.

Chart B1: Summary of project activities, 2019.

Technical specification	Area (ha)	Number of households of smallholders	Number of community groups
<b>AF-CAFE-TRO1</b>	85	1	2
<b>AF-TAUG-TRO1</b>	10	1	
<b>FOR-ACME-TRO1</b>	11	2	
<b>FOR-REST-SUBT1</b>	176.8	24	1.
<b>Total</b>	282.8	28	3

[Escriba aquí]

Figura 3 Area per system registered in Scole' te during 2019



## B2. Project activities additional to the issuance of Plan Vivo Certificates

The Scole'te Program had during 2019, with some initiatives that helped to potentiate the objectives, activities and a scope of the program. The alliance established with the United States Forest Service, which launched the **Community Forest Monitoring Protocol**, continued in various communities of the El Ocote Jungle Biosphere Reserve, which has already had good results in the photo-trapping of species, mainly of mammals, present in the area. This monitoring is carried out by technicians and participants of the Scole'te program, who have provided valuable data in terms of biodiversity.

Collaboration with the National Commission for the Knowledge and Use of Biodiversity (CONABIO) began, through a GEF initiative. The collaboration seeks to strengthen the production basic systems for crops of the communities, in order to rescue native sedes and their management. This project is carried out in communities of the Zoque-Sumidero Canyon Jungle Complex, and in some of them smallholders participating in Scole'te are also participating in this initiative. It is important to note that this initiative will be developed from under a gender perspective vision.

As part of the fire management actions in the Selva el Ocote Biosphere Reserve (REBISO), community protocols for the care of forest fires were designed, which were carried out with the participation of the entire community. During 2019, these communities implemented these protocols, achieving greater participation of women. It should be noted that an achievement is the integration of mixed community brigades. We hope that this experience will escalate and allow for a more inclusive activity.

## Section C: Issuance of Plan Vivo Certificates

### C1 Contractual statement

Chart C1: Issuance request for Plan Vivo Certificates and sales allocation

[Escriba aquí]

Total amount of CO2 (vintage 2019)	TCO2
Total amount of sales (vintage 2019)	USD
Average price of certificates	USD
Percentage of sales disbursed to communities	
Number of participants registered for current sales (vintage 2018)	31 (registered contracts. Of these, 3 community groups)
Total area for vintage 2019 sales	282.8 hectáreas
Technical specifications in use	<ul style="list-style-type: none"> <li>• AF-CAFE-TRO1</li> <li>• AF-TAUG-TRO1</li> <li>• FOR-ACME-TRO1</li> <li>• FOR-REST-SUBT1</li> </ul>

System	Description	Area (ha)	tC 02 per system	Buffer (10%)	Saleable tCO2 (90%)
<b>AF-CAFE-TRO1</b>	Living fences for tropical climate	85	11,601	1,160	10,441
<b>AF-TAUG-TRO1</b>	Taungya	10	2,097	210	1,887
<b>FOR-ACME-TRO1</b>	Improved tropical fallow	11	2,100	210	1,890
<b>FOR-REST-SUBT1</b>	Forest restoration	176.8	73,834	<a href="#">22,150<sup>1</sup></a>	51,684
	<b>Total</b>	282.8	89,632	23,730	65,902

**Note: For more information, check Annex 1**

## Section D: Sales of Plan Vivo Certificates

### D1: Sales of Plan Vivo Certificates

Charts D1, describes the Plan Vivo Certificates of the Scole'pe Program sold in 2019.

<sup>1</sup> Buffer Of 30%. Updated carbon estimate based on review of the technical specifications in 2020 [Escriba aquí]

Chart D1: Sales of Plan Vivo Certificates, 2019

Vintage	Buyer	Number of PVCs	Price per PVC for project participants (\$)	Total sold
2019	Leobardo Palacios Antonio	269		
2019	Climate Stewards	1640		
2019	PROFEPA	1		
2019	Zeromission	2600		
2019	HABITAS Tulum	100		
2019	Gaser de México SA de CV	10		
2019	Salinas del Pacifico SA de CV	1058		
2019	Occidental Nuevo Vallarta	15		
2019	Green My Room	466		
2019	Barceló Puerto Vallarta	9		
2019	Oportunidades para Emprendedores SAPI de CV, SOFOM ENR	82		
2019	Community Tours Sian Kaan	506		
2019	Sustentur	30		
2019	Matías García Romero	35		
2019	Ben Twist	18		
2019	Carnaval de Bahidora (Distrito Global )	110		
2019	Asociación Nacional de Tiendas de Autoservicio y Departamentales AC ANTAD	104		
2019	Alexsandrovich Andrade Tapia	19		
2019	Unión de Crédito General SA de CV	33		
2019	Zeromission	20,028		
2019	Desarrolladora MAM de Centro América	2,071		
2019	Festival Art With Me*GNP	432		
2019	Art With Me-Habitas	40		
2019	Zeromission	5,001		
2019	Absolut México	13		
2019	Fondo Procuena Valle de Bravo AC	2		
2019	ION Financiera SAPI de CV SOFOM ER	50		
2019	Natura Distribuidora de México	6		
2019	Raúl Arturo González Mendoza y Coopropietarios	19		
2019	Marina La Playita SA de CV	44		
2019	BCO Kukulcan S. de R.L. de C.V. (Occidental Costa Cancún)	40		
2019	BCO Tucanun S. de R.L. de C.V. (Hotel Occidental Tucanun)	40		
2019	José Alberto Vargas Vara	108		
2019	Grupo Bimbo	8		
2019	Zeromission	19,249		
2019	Zeromission	5,000		
2019	Zeromission	751		
2019	Franziska Kleinmagd	17		
2019	Luis Alejandro Montes de Oca	19		

[Escriba aquí]

2019	Asociación de Relaciones Públicas del Caribe Mexicano AC	17
2019	David Hernández Cruz	40
2019	Edwin Chavez Villanueva	40
2019	Enrique Hernández Olvera	40
2019	Gabino Hernández Olvera	40
2019	Humberto Emiliano Chávez Islas	40
2019	Iván Calderón Salazar	40
2019	Julio César Hernández Cruz	40
2019	Moisés Rosas Bonilla	40
2019	Rosalio Rosas Bonilla	40
2019	Zeromission	5,000
2019	Unión de Crédito Concreces SA de CV	50
2019	Be Tulum	216
2019	Nomade Tulum	216
<b>Total vintage 2019 (Issuance request)</b>	<b>65,902</b>	

[Escriba aquí]



	LLANO GRANDE										2			2
<b>LA TRINITARIA</b>	TZISCAO											3		3
<b>LAS MARGARITAS</b>	GONZALEZ DE LEON							10			2	6		18
<b>OCOSINGO</b>	CRISTÓBAL COLÓN			1	2									3
	DAMASCO				9									9
	METZABOK	14	10											24
	VILLA LAS ROSAS			2			1	12	9					24
<b>OCOZOCOAUTLA DE ESPINOZA</b>	C.N.C									1				1
	NICOLAS BRAVO									5	2			7
	NICOLAS BRAVO								3	4	4			11
	NUEVO SAN JUAN CHAMULA							11			4			15
	NUEVO SAN JUAN CHAMULA										11			11
	SAN JOAQUIN EL PROGRESO										6			6
<b>SAN FERNANDO</b>	VICENTE GUERRERO										6			6
<b>VILLA CORZO</b>	BONANZA							11				2		13
	LA MURALLA											1		1
	LAS MARAVILLAS											9		9
	SAN JUAN DE LOS ANGELES										1			1
	TIERRA SANTA								6					6
<b>VILLA CORZO</b>	BONANZA								1					1
	NUEVA REFORMA AGRARIA									27				27
	SAN JUAN DE LOS ANGELES								2					2
	TIERRA SANTA								2					2
<b>VILLAFLORES</b>	EJIDO CALIFORNIA												1	1
	LOS ÁNGELES				1	3								4

[Escriba aquí]



	NUEVA INDEPENDENCIA								1					1
	SOMBRA DE LA SELVA								1					1
	VIVA CHIAPAS			1		1								2
<b>Total general</b>		14	10	4	12	14	1	55	35	47	89	32	31	344

[Escriba aquí]

## E2: Continuity of commitments

### Reallocation of carbon commitments

In 2017, the AMBIO conducted an analysis of the farmers who, for different reasons, have left the program. Based on the field data and the analysis of the information, it was determined to reallocate (replace) tons of CO<sub>2</sub> that are still under commitment, which are in total 16,957.31 tCO<sub>2</sub>, according to the data in Chart E2(a).

Chart E2(a) Reallocation of carbon commitments within the program.

Zone and/or community	Sales commitments (tCO <sub>2</sub> )	Amount of CO <sub>2</sub> paid to Project participants	Tons of CO <sub>2</sub> (TC)	Area (has)	Amount of CO <sub>2</sub> to reallocate
Chol	5,377.10	3,254.08	578.48	36.50	2,123.02
Tseltal	1,228.72	828.39	109.08	5.00	400.32
Tojolabal	4,195.76	3,238.52	260.83	33.50	957.25
Tumbala	154.58	57.47	26.46	1.25	97.11
Lacandona	412.21	180.34	63.18	4.00	231.87
Sierra Madre	21,052.88	13,421.52	2,079.39	188.75	7,631.36
Frontera Corozal	8,688.21	4,558.54	1,127.85	34.00	4,139.21
Miramar	3,485.99	2,108.82	375.25	16.25	1,377.17
<b>TOTAL</b>	<b>44,595.45</b>	<b>27,647.68</b>	<b>4,620.52</b>	<b>319.25</b>	<b>16,957.31</b>

The reallocation of this carbon is a strategic planning process. For the moment, the Project envisions to use its buffer to reallocate these PVCs, However, this is a temporary measure. The project is still in the process of analysing the amount of carbon to be reallocated and there are various strategies how they will be reallocated (see annual report 2017).

## E3: Socioeconomic monitoring

The Program seeks to measure the co-benefits from indicators that allow us to know the impact from the ecosystem services approach as well as the contribution to the fulfilment of the Sustainable Development Goals (SDGs) of the United Nations Organization (UN).

The following tables show the progress of each of them, which are divided into social, environmental and biodiversity.

Chart E3(a). Indicators of the program with contribution to the SGDs

Sustainable Development Goal (SDG)	Indicator of the program	Baseline 2017	Results 2018	Results 2019	Total
SDG 1.- No Poverty	Número de Project participants (families) <sup>2</sup>	1359	35	31	1,439
	PES to project participants (dolls) <sup>3</sup>	646,661.76	44,090.32	34,914.06	725,666.14
SDG 2.- No Hunger	Areas reforested (ha) with diversification species <sup>4</sup>	27	23.5	106	156.5
SDG4.- Quality Education	Total number of training event <sup>5</sup>	33	5	75	113
	Number of trained women	177	73	134	384
	Number of trained men	194	40	428	662
	Number of trained indigenous	-	-	41	41
	Number of trained children	--	700	0	700
SDG 5.- Gender Equality	Number of working groups with women, Young, indigenous people and elderly <sup>6</sup>	7	0	3	10
	Número de acuerdos generados por los grupos de trabajo o asambleas ejidales que impacten al proyecto	-	-	0	0

<sup>2</sup> SDG 1.- No Poverty: It is measured by observing the payments resulting from the project, which have a significant impact on the economy of the participants' households

<sup>3</sup> This data is accumulative of payments from the year 1997 to 2017, and it serves as baseline

SDG 1.- No Poverty: It is measured by observing the payments resulting from the project, which have a significant impact on the economy of the participants' households

<sup>4</sup> SDG 2.- Zero Hunger: The project measures food security in terms of diversification of food crops, such as fruit trees, palms, corn, beans, backyard vegetables and, in some cases, agrosilvopastoral species

<sup>5</sup> SDG 4.- Quality Education: The project measures the number of training events, which seek to improve the participants' local knowledge about the impacts of climate change, resilience, food security, medicinal use of plants, management of agroforestry systems, diversification of plots, pest control, land management and gender equality.

<sup>6</sup> SDG 5.- Gender Equality: This objective is measured primarily by the inclusion of people. All activities are designed to include underrepresented groups, such as women, youth, indigenous and the elderly. Through Plan Vivos and workshops provided, all family members are invited to participate in the design and implementation of activities.

[Escriba aquí]

	Number of women actively participating in activities of the program (capacity building and implementation of productive projects)	5	10	128	143
SDG 8.- Good Jobs and Economic Growth	Direct employments <sup>7</sup>	10	10	10	30
	Seasonal employments	158	201	363	722
SDG 17.- Partnerships for the Goals	Participation in national committees for environmental protection <sup>8</sup>	6	5	11	22
	Partnerships with international organizations	6	6	4	16
	Number of productive practices implemented for mitigation and adaptation to climate change	-	-	2	2

#### E4: Environmental and biodiversity monitoring

Chart E4(a). Indicators of the program with contribution to the SGDs

Sustainable Development Goal (SDG)	Indicator of the program	Baseline 2017	Results (2018)	Results (2019)	Total
SDG 13.- Climate Action	<a href="#">Number of hectares reforested[1]<sup>9</sup></a>	102.5	101.75	260.69	464.94
	Number of communities with sources of water	-	--	13	13

<sup>7</sup> SDG 8.- Decent Work and Economic Growth: The project measures this objective through seasonal and permanent work

<sup>8</sup> SGD 17. Partnerships for the goals: Scole'te has a long record of international and national allies to implement different activities that contribute to the conservation of ecosystems in the state of Chiapas..

<sup>9</sup> SDG 13.- Climate Action: The project measures these indicators by listing the areas under reforestation, afforestation and conservation that contribute to mitigating climate change, carbon sequestration and guaranteeing water supply in quantity and quality.

[Escriba aquí]

ODS 15.- Vida en Ecosistemas Terrestres	<a href="#">Number of species used for reforestation [2]<sup>10</sup></a>	18	22	25	65
	Number of species withing IUCN and the NOM 059-SEMARNAT	5	4	5	14
	Number of agroforestry systems promoted	5	4	4	9
	Number of protected biological corridors and actions in ANPs	-	-	3	3

The details of the species registered in the monitoring of the areas can be seen in Annex 5

## Section F: Impacts

### F1: Evidence of results

More than 20 years after the implementation of the program, a general analysis has been carried out on the environmental and ecosystemic impacts or changes in the landscepe with the establishment of agroforestry plots due to the particular actions developed by the smallholders.

Some of the environmental impacts of these actions are:

- Strengthening in the connectivity of agroforestry and forest landscapes at the local level
- Reduction of Soil degradation by the recovery of forest areas
- Maintainance of the quantity and quality of the water, spaces have been established for the protection of groundwater reserve at the community level
- Contribution to the maintenance and recovery of biodiversity, by increasing forest cover and the maintenance of trees in fragmented landscapes, which facilitates the transit of wild animals with less risk.

Some general conclusions of this previous analysis are:

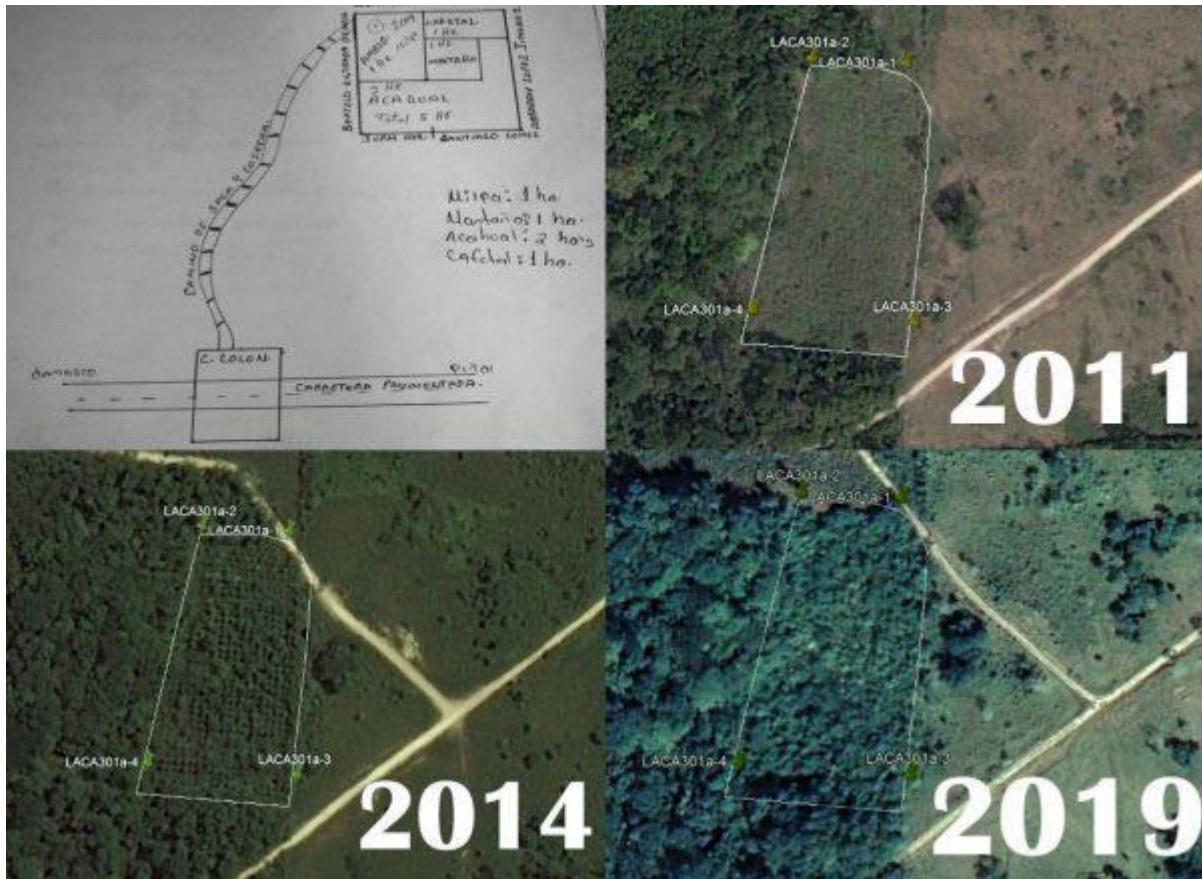
The establishment of the plots is based on the interests of each smallholder, group or community, considering their socio-environmental needs. These spaces serve as forest patches, which sums to the connectivity of the landscape.

---

10 SDG 15.- Life on Land: The project measures this objective by observing the presence of biodiversity, soil fertility, habitats and the regulation of microclimates.

[Escriba aquí]

Figure 1: Evidence in land change use of a plot of 1 hectare under the Taungya Agroforestry System, Ejido Cristóbal Colón, Municipality of Ocosingo, Chiapas



## Section G: Payments for Ecosystem Services

### G1: Summary of annual PES

Chart G1: Summary of annual payments made to project participants

Year	USD
2019	34,914.06

[Escriba aquí]

2018	44,090.32
2017	28,977.93
2016	20,947.22
2015	39,903.69
2014	27,721.00
2013	35,963.11
2012	45,162.60
2011	102,298.03
2010	98,433.07
2009	45,921.17
2008	28,083.02
2007	23,165.91
2006	30,268.65
2005	16,708.54
2004	22,921.09
2003	47,932.00
2002	29,088.50
2001	3,166.26
<b>Total</b>	<b>725,666.17</b>

## Section H: Participation

### H1: Enrolment and new project áreas

In 2019, ejidatarios from La Azteca and Piedra Parada Ejidos (Cacahoatan, a municipality of the El Soconusco economic region in Chiapas) started their participation in Scolel'te. These ejidos had previously worked with the International Union for Conservation of Nature (IUCN) with soil restoration activities. Through the Scolel'te program, actions can continue through the use of three agroforestry systems, like: Coffee Timber, Taungya and Improved Fallow. In total, there are 100 hectares registered with 76 beneficiary families, of which 53 are men and 26 are women.

### H2: Project potential

An area of opportunity are restoration areas in ejidos with forestry management, which need technical monitoring and other incomes to improve their management activities of their restoration áreas. These areas are excellent places where for the program to promote forest management, to implement silvicultural practices to improve wood quality and to reduce risks of forest fires. As well, to boost their access to better markets (the legal market in market for the wood is still not competitive for the community management). In this sense, it represents a challenge for the program.

### H3: Community participation

During 2019, we held: 1 semester meeting, 2 regional meetings with technicians and 3 at a regional level.

The semester meeting was held in January, at the Ambio offices, in the city of San Cristóbal de las Casas,

[Escriba aquí]

Chiapas. At this meeting, the administrative data of the program was presented, as well as its technical advances, and the status of the sales. In particular, the situation of the oldest plots of the program and the gathering of information in the field to analyze current wood data were addressed. It was commented that this information will be released in the following months, once data analysis is available.

#### *Regional Meetings with Technicians.*

They were celebrated in January and October.

At the first meeting, the annual operating program was introduced, highlighting the need for larger areas for the registry in the program, to reduce operating costs. Likewise, there were designed the planning of activities to be promoted in the following months of the year. One of the relevant aspects is that they scheduled regional meetings in the areas with the largest number of communities, to facilitate their participation. The results of the surveys on the use of carbon payments by the beneficiaries were presented, highlighting the aspects of food purchases, payment of wages and education with the highest percentages.

In the second meeting, some topics addressed were changes to the monitoring formats, the participation of AMBIO in the Seminar "Challenges to take advantage of the forest potential of Mexico". It was commented that through the connection with other organizations, windows of opportunity were opened for the exchange of experiences. Concluding that Ambio's participation was important in order to know the current situation of the wood market in the country, and the current conditions of operation.

#### *Regional Meetings*

One of the strategies analyzed by Ambio was the need to have a close communication strategies with some technicians and smallholders in the Program's work regions, specially with those who cannot regularly attend the regional technician meetings in San Cristobal. For that reason, 3 regional meetings were held throughout the year; 1 in the Sierra Region, 1 in the Chi6n-Ocosingo Region and 1 in the Selva-Zoque Complex.

In these meetings, the relevant topics were addressed, like: the presentation of the update in the technical specifications that were approved by the Plan Vivo Foundation, since the amounts of carbon stocks and the periods of commitments have changed, also, the new monitoring and payment scheme was explained, This is linked to the previous point, and in this same sense, the indicators that will be reported were introduced with the the guidelines for compliance, as well as for payments.

Another topic addressed was the update of the contract between AMBIO and the Smallholders, a document designed by the Mexican Center for Environmental Law (CEMDA) and which seeks to strengthen this working relationship, under the focus of the Mexican laws applicable to the matter. This was also presented to smallholders and technicians, since starting this year, it is the one that would be applied. Finally, the format for field monitoring was revised, this as a follow-up action and for updating in some cases, since in some cases there were new community technicians.



[Escriba aqu ]



## Section I: Operational Costs

### I1: Budget

The following chart shows the total expenses of the Program, covered either by the Scolel'te Program as well as by other projects and initiatives implemented by AMBIO.

Chart I1. Scolel'te 2019 budget (in USD)

Concept	Description	Amount	Cotribution from the sale of PVCs	Cotribution from other sources
<b>Salaries</b>				
Administrative director	Responsible for administrative duties and the assignment of contracts	7,284.86	2,284.86	5,000.00
Technical director	Responsible for technical management	5,137.21	1,637.21	3,500.00
Carbon sales coordinator	Responsible for carbon sales, marketing activities and documents edition	11,827.09	11,827.09	0.00
Technical coordinator	Responsible for coordination of regional and community technicians. Also in charge of monitoring activities.	8,731.80	4,365.90	4,365.90
Field support	Support to the technical coordinator of the program	4,667.75	4,667.75	0.00
Accountant	Responsible for programming transfers, payments, subsidies and other expenses	11,226.00	3,742.20	7,484.00
Regional technicians	Representatives of the regions, who provide direct communication with community technicians	10,449.12	5,224.56	5,224.56
<b>Subtotal</b>		<b>59,323.83</b>	<b>33,749.57</b>	<b>25,574.46</b>
<b>Field expenses</b>				
Field allowances	Field trips by AMBIO staff and regional technicians	17,253.49	7,753.49	9,500.00
Monitoring expenses	Salaries for regional and community technicians	10,632.46	4,132.46	6,500.00
Purchase of equipment	Plantation management equipment	151.95	151.95	00.00
<b>Subtotal</b>		<b>28,037.90</b>	<b>12,037.90</b>	<b>16,000.00</b>
<b>Administrative expense</b>				
Trust (FBC) administration fees	Banking fees for the administration of the project trust fund	3,664.63	3,664.63	0.00
Taxes	Income taxes paid to the	111.34	111.34	0.00

[Escriba aquí]

	Mexican Ministry of Finance as result of the PES			
<b>Subtotal</b>		<b>3,775.97</b>	<b>3,775.97</b>	<b>00.00</b>
<b>Strengthening of governance and training activities</b>				
Exchange of experiences	Transportation, food and accommodation	1000.00	00.00	1000.00
Bi-annual meetings	Follow-up meetings with regional and community technicians	599.76	299.88	299.88
Quarterly meetings	Follow-up meetings with regional and community technicians	1,811.86	905.93	905.93
<b>Subtotal</b>		<b>3,411.62</b>	<b>1,205.81</b>	<b>2,205.81</b>
<b>Other expenses</b>				
Vehicle maintenance and insurance	Insurance of the program's own vehicle, as well as payments for the concept of maintenance.	2,441.43	2,441.43	0.00
Stationery and bank f	Purchase of stationery for the field, training and meetings. As well as printer and photocopier inks	4,053.91	1,053.91	3,000.00
<b>Subtotal</b>		<b>6,495.34</b>	<b>3,495.34</b>	<b>3,000.00</b>
<b>TOTAL</b>		<b>101,044.86</b>	<b>54,264.59</b>	<b>46,780.27</b>

[Escriba aquí]

# Annexes

## Annex 1. List of smallholders and plots with sales commitments 2019

SMALLHOLDER ID	PLOT ID	EJIDO OR COMMUNITY	TECHNICAL SPECIFICATION	AREA (ha)	CO2 x SYSTEM	Buffer (10%) <sup>11</sup>	CO2 WITHOUT Buffer	ALLOCATION CO2	
<b>MONT001</b>	MONT001a	EJIDO COAPILLA	COAPILLA	FOR-REST-SUBT1	20	8353.39	2506.02	5847.37	5847.37
<b>TOJ199</b>	TOJ199a	GUADALUPE LAS DELICIAS	COMITAN DE DOMINGUEZ	FOR-REST-SUBT1	2	835.34	250.60	584.74	584.74
<b>TOJ200</b>	TOJ200a	GUADALUPE LAS DELICIAS	COMITAN DE DOMINGUEZ	FOR-REST-SUBT1	8	3341.35	1002.41	2338.95	2338.95
<b>TOJ159h</b>	TOJ159h	SAN JOSE LAS ROSAS	COMITAN DE DOMINGUEZ	FOR-REST-SUBT1	2.5	1044.17	313.25	730.92	730.92
<b>TOJ159i</b>	TOJ159i	SAN JOSE LAS ROSAS	COMITAN DE DOMINGUEZ	FOR-REST-SUBT1	6	2506.02	751.80	1754.21	1754.21
<b>TOJ161</b>	TOJ161d	SAN JOSE LAS ROSAS	COMITAN DE DOMINGUEZ	FOR-REST-SUBT1	4	1670.68	501.20	1169.47	1169.47
<b>TOJ163</b>	TOJ163c	SAN JOSE LAS ROSAS	COMITAN DE DOMINGUEZ	FOR-REST-SUBT1	4	1670.68	501.20	1169.47	1169.47
<b>TOJ160</b>	TOJ160b	SAN JOSE LAS ROSAS	COMITAN DE DOMINGUEZ	FOR-REST-SUBT1	1	417.67	125.30	292.37	292.37
<b>TOJ171</b>	TOJ171c	SAN JOSE LAS ROSAS	COMITAN DE DOMINGUEZ	FOR-REST-SUBT1	2	835.34	250.60	584.74	584.74
<b>TOJ166</b>	TOJ166c	SAN JOSE LAS ROSAS	COMITAN DE DOMINGUEZ	FOR-REST-SUBT1	1	417.67	125.30	292.37	292.37

<sup>11</sup> For the restoration system the buffer is 30%  
[Escriba aquí]

<b>TOJ168</b>	TOJ168b	SAN JOSE LAS ROSAS	COMITAN DE DOMINGUEZ	FOR-REST-SUBT1	2	835.34	250.60	584.74	584.74
<b>TOJ170</b>	TOJ170b	SAN JOSE LAS ROSAS	COMITAN DE DOMINGUEZ	FOR-REST-SUBT1	2	835.34	250.60	584.74	584.74
<b>TOJ179</b>	TOJ179b	SAN JOSE LAS ROSAS	COMITAN DE DOMINGUEZ	FOR-REST-SUBT1	1	417.67	125.30	292.37	292.37
<b>TOJ201</b>	TOJ201a	SAN JOSE LAS ROSAS	COMITAN DE DOMINGUEZ	FOR-REST-SUBT1	3	1253.01	375.90	877.11	877.11
<b>TOJ202</b>	TOJ202a	SAN JOSE LAS ROSAS	COMITAN DE DOMINGUEZ	FOR-REST-SUBT1	2	835.34	250.60	584.74	584.74
<b>TOJ203</b>	TOJ203a	SAN JOSE LAS ROSAS	COMITAN DE DOMINGUEZ	FOR-REST-SUBT1	3	1253.01	375.90	877.11	877.11
<b>TOJ204</b>	TOJ204a	SAN JOSE LAS ROSAS	COMITAN DE DOMINGUEZ	FOR-REST-SUBT1	1	417.67	125.30	292.37	292.37
<b>TOJ204</b>	TOJ204b	SAN JOSE LAS ROSAS	COMITAN DE DOMINGUEZ	FOR-REST-SUBT1	2	835.34	250.60	584.74	584.74
<b>TOJ205</b>	TOJ205a	SAN JOSE LAS ROSAS	COMITAN DE DOMINGUEZ	FOR-REST-SUBT1	4	1670.68	501.20	1169.47	1169.47
<b>TOJ206</b>	TOJ206a	SAN JOSE LAS ROSAS	COMITAN DE DOMINGUEZ	FOR-REST-SUBT1	1	417.67	125.30	292.37	292.37
<b>TOJ207</b>	TOJ207a	SAN JOSE LAS ROSAS	COMITAN DE DOMINGUEZ	FOR-REST-SUBT1	1	417.67	125.30	292.37	292.37
<b>TOJ207</b>	TOJ207b	SAN JOSE LAS ROSAS	COMITAN DE DOMINGUEZ	FOR-REST-SUBT1	1	417.67	125.30	292.37	292.37
<b>TOJ208</b>	TOJ208a	SAN JOSE LAS ROSAS	COMITAN DE DOMINGUEZ	FOR-REST-SUBT1	2	835.34	250.60	584.74	584.74
<b>TOJ208</b>	TOJ208b	SAN JOSE LAS ROSAS	COMITAN DE DOMINGUEZ	FOR-REST-SUBT1	1	417.67	125.30	292.37	292.37
<b>TOJ187</b>	TOJ187b	GONZALEZ DE LEON	COMITAN DE DOMINGUEZ	FOR-REST-SUBT1	0.6	250.60	75.18	175.42	175.42
<b>SOCO001</b>	SOCO001a	EJIDO PIEDRA PARADA	CACAOHOATAN	AF-CAFE-TRO1	40	5459.49	545.95	4913.54	4913.54
<b>SOCO002</b>	SOCO002a	EJIDO AZTECA	CACAOHOATAN	AF-CAFE-TRO1	45	6141.93	614.19	5527.74	5527.74

[Escriba aquí]

<b>SOCO002</b>	SOCO00 2b	EJIDO AZTECA	CACAHOATAN	AF-TAUG- TRO1	10	2097.0 4	209.70	1887.3 3	1887.33
<b>SOCO002</b>	SOCO00 2c	EJIDO AZTECA	CACAHOATAN	FOR-ACME- TRO1	5	954.38	95.44	858.95	858.95
<b>RISE337</b>	RISE337 a	EJIDO CALIFORNIA	VILLAFLORES	FOR-REST- SUBT1	99.7	41631. 57	12489. 47	29142. 10	29142.10
<b>REBI045</b>	REBI045 b	LLANO GRANDE	JIQUIPILAS	FOR-ACME- TRO1	6	1145.2 6	114.53	1030.7 3	1030.73
<b>TOTAL</b>					<b>282.8</b>	<b>89,632</b>	<b>23,730</b>	<b>65,902</b>	<b>65,902</b>

[Escriba aquí]

## Annex 2. Results of the monitorings of plots for the registration in 2019

Plot ID	Num/ Mon	Year	Result	Species (See Annex 5 for names in english)	DG (m)	DT	AH (m)	HT (m)	ST (m)	SR (%)	DR (%)
<b>MONT001a</b>	1	2019	240	Pino 104, Liquidambar 72, Roble 41, Chiquinib 13, Cuajinicuil 9, Cipres 1	Variable	13	2.87	3.84	5.42	1.50	100
<b>TOJ199a</b>	1	2019	104	Roble 67, Pino 20, Cipres 4	3.00	0	0.65	2	0.15	100	0
<b>TOJ200a</b>	1	2019	654	Pino 322, Cipres 88, Roble130, Chiquinib 115, Madron 1	1.81	0	3.69	6.3	0.12	94.25	5.75
<b>TOJ200a</b>	1	2019		Pino 42, Chiquinib 71, Cipres 10, Roble 3, Modroño 2	1.97	2	4.345	5.45	0.225	100	0
<b>TOJ161d</b>	1	2019	274	Pino 213, Cipres 9, Roble 38, Chiquinib 7	1.16	0	1.89	5.5	0.05	100	0
<b>TOJ159h</b>	1	2019	84	Roble 51, Pino 1, Cipres 11, Chiquinib 10, Shinil 4	2.01	0	3.22	5	0.12	80	20
<b>TOJ159i</b>	1	2019	413	Pino 138, Cipres 53, Roble 127, Chiquinib 85	1.48	0.00	3.98	6.50	0.05	88.25	11.75
<b>TOJ201a</b>	1	2019	324	Pino 261, Roble 45, Cipres 18	3.40	0.00	0.91	2.52	0.33	100.00	0
<b>TOJ202a</b>	1	2019	236	Pino 65, Cipres 64, Roble 58, Chiquinib 49	1.41	0.00	1.78	4.00	0.30	83.00	17
<b>TOJ203a</b>	1	2019	141	Pino 121, Cipres 12, Roble 9	1.75	0.00	1.27	1.98	0.33	80.00	20
<b>TOJ203a</b>	1	2019		Pino 50, Cipres 10, Roble 1, Chiquinib 1, Modroño 1	1.87	0.00	1.42	3.40	0.10	100.00	0
<b>TOJ179b</b>	1	2019	89	Cipres 12, Pino 1, Roble 66, Chiquinib 10,	1.00	0.00	2.70	4.50	0.10	71.00	29
<b>TOJ163c</b>	1	2019	272	Pino 153, Cipres 39, Roble 49, Chiquinib 1	1.88	1.00	3.41	5.00	0.40	100.00	0

[Escriba aquí]

<b>TOJ171c</b>	1	2019	126	Cipres 33, Pino 2, Roble 34, Chiquinib 43	1.83	1.00	1.63	3.74	0.18	100.00	0
<b>TOJ204a</b>	1	2019	14	Cipres 13, Pino 1,	3.60	5	3.33	4.2	1.2	100	0
<b>TOJ204b</b>	1	2019	129	Pino 7, Cipres 62, Roble 54, Chiquinib 6	2.11	0	2.205	3.5	0.125	100	0
<b>TOJ168b</b>	1	2019	126	Pino 11, Cipres 42, Roble 45, Chiquinib 28	1.40	0	1.155	3.1	0.115	100	0
<b>TOJ170b</b>	1	2019	123	Pino 26, Cipres 49, Oble 48	2.13	10	2.425	3.95	0.4	100	0
<b>TOJ170b</b>	1	2019		Cipres 26, Pino 7, Roble 11	1.84	1	3.3	4.57	0.15	100	0
<b>TOJ160b</b>	1	2019	155	Pino 109, Cipres 52, Chiquinib 5, Roble 10	1.48	3	3.09	4.15	0.25	90	10
<b>TOJ166c</b>	1	2019	127	Cipres 23, Pino 27, Roble 77	1.69	1.00	2.18	4.25	0.43	100.00	0.00
<b>TOJ205a</b>	1	2019	192	Pino 54, Cipres 10, Roble 110, Chiquinib 18	2.17	3.00	3.33	5.02	0.54	73.33	26.67
<b>TOJ206a</b>	1	2019	145	Pino 103, Roble 21, Cipres 15, Chiquinib 6	1.20	0.00	1.21	2.94	0.80	100.00	0.00
<b>TOJ207a</b>	1	2019	315	Pino 200, Cipres 53, Roble 32, Chiquinib 18	1.73	0.00	2.93	5.00	0.50	85.00	15.00
<b>TOJ187b</b>	1	2019	287	Pino 251, Cipres 36	0.00	194.00	2.78	4.70	1.60	100.00	50.00
<b>SOCO001a</b>	1	2019	383	Chalum (Inga Spp) 383	3 X 3	540.00	0.59	0.29	0.00	89.31	10.71
<b>SOCO001a</b>	1	2019		Chalum (Inga Spp) 41	3 x 3	86.00	0.73	0.54	0.00	90.00	10.00
<b>SOCO002a</b>	1	2019	207	Chalum (Inga Spp) 207	3 x 3	847.00	0.62	0.28	0.00	42.37	56.71
<b>SOCO002b</b>	1	2019	215	Chalum (Inga Spp) 179, Roble (Tabebuia Rosea)36	3 x 3	85	0.82	0.15	0.00	73.11	27.78
<b>SOCO002c</b>	1	2019	131	Chalum (Inga Spp) 99, Roble (Tabebuia Rosea)32	3.5 X 3.5	60	0.832	0.756	0	75	25
<b>RISE337a</b>	1	2019	1618	Pino 1078, Encino 337, Roble 128, Chalum 66, Nache 7, Guanacastle 2	Variable	13	4.60	0.13	2.89	100	0

[Escriba aquí]

<b>REBI045b</b>	1	2019	1675	Maculis 460, Caobilla 1215	3.78 x 3.84	69	2.67	4.4	0.43	0	0
-----------------	---	------	------	----------------------------	----------------	----	------	-----	------	---	---

<sup>1</sup> Identification code for plots

<sup>1</sup> Number of the monitoring corresponding to the plot

<sup>1</sup> Number of living trees found in the plot

<sup>1</sup> Number of living trees found in the plot in the internal verification. When no verification corresponds to the plot, value is 0.

<sup>1</sup> General Distance (DG) between trees planted in the plot

<sup>1</sup> Dead Trees (DT) found in the plot

<sup>1</sup> Average Height (AH) of the trees in the plot

<sup>1</sup> Sanity Rate (SR)

<sup>1</sup> Damage Rate (DR)

<sup>1</sup> Highest Tree (HT)

<sup>1</sup> Smallest Tree (ST)

[Escriba aquí]



### Annex 3. Results of monitoring carried out in 2019

Follow-up monitoring and internal verification in previously registered areas under management, performed in 2019

Plot ID	Num/Mon	Year	Result	Species (See Annex 5 for names in english)	AP (m)	AG (m)	ACH (m)
LACA010a	3	2019	200	Caoba(130),Tinco(46),Baril(21),Canxan(2),Maculis(1)	4.97	9	1.5
LACA011a	5	2019	217	Caoba(187),Maculis(30)	4.18	8	2
LACA012a	5	2019		Caoba(314),Cedro(7),Curcho Negro(4),Maculis(13)	4.04	11	1.35
LACA012a	5	2019	335	Caoba(270),Baril(30),Maculis(25),Ceiba(1),Paulte(1),Corchonegro(2),Cabeza Mico(1),Cedro(5)	4.56	10	1
LACA012b	4	2019	351	Caoba(294),Hormiguillo(6),Maculis(17),Tinco(9),Baril(22),Zapote(3)	4.24	12	1.5
LACA013a	5	2019	413	Caoba(302),Ceiba(20)Ramon(37),Maculis(54)	5	9	2
LACA013b	4	2019	372	Caoba(315),Maculis(40),Ceiba(9),Cedro(8)	4	7	1.5
LACA014a	5	2019	189	Caoba(180),Baril(5),Ceiba(4)	4	10	2
LACA016a	5	2019	264	Caoba(180),Maculis(40),Tinco(43),Cedro(1)	5	8	2
LACA017a	5	2019	155	Caoba(120),Maculis(25),Cabeza Mico(2),Ceiba(2),Baril(5),Cedro(1)	3	8	1
LACA017b	4	2019	202	Caoba(165),Cedro(1)Wayte(3),Maculis(22)Frijolillo(1)Baril(10)	4	9	2

[Escriba aquí]

LACA018a	4	2019	432	Caoba(341),Maculis(31),Cedro(9), Cabeza De Mico(8),Hormiguillo(43)	4.04	9	2
LACA018b	4	2019	484	Caoba(484)	4.88	10	1.5
LACA019a	5	2019		Caoba(365),Laurel(18),Ceiba(13),Hormiguillo(41),Jobillo(10),Cedro(10),Tripal(9)	4	8	1
LACA019a	5	2019	465	Caoba(366),Laurel(18),Ceiba(13),Hormiguillo(41),Jobillo(6),Cedro(12),Tripal(9)	4.41	8	1.5
LACA019b	4	2019	339	Caoba(262),Hormiguillo(3),Lavel(16),Ceiba(8),Cedro(13),Jobillo(15),Amate(2)	4.84	15	2
LACA021a	5	2019	312	Cacate(2),Caoba(187),Tinto(26),Maculis(37),Baril(18),Bojom(13) Jobillo(12),Cedro(17)	4.54	7	1
LACA022a	5	2019	312	Caoba(228),Cacate(13),Maculis(22),Tinco(15),Baril(34)	4.22	11	0.9
LACA022b	4	2019	309	Caoba(180),Chicozapote(21),Tinto(13),Palo Mulato 7, Jobillo 4, Ceibo 32, Maculis 4, Pajulte 8,,Canshan(6),Maculis(18),Cedro(10)	4.08	10	1.21
LACA023a	5	2019	342	Caoba(282),Ramon(7),Maculis(39)Tinco(14)	6.39	8	1.2
LACA023b	4	2019	464	Caoba(452),Maculis(8),Ramon(4)	4.14	7	2
LACA033a	4	2019	428	Caoba(294),Maculis(46),Wayte(16),Palo Mulato(12),Cedro(18),Baril(14),Paulte(15),Hormiguillo(13)	5.47	15	2.2
LACA033b	4	2019		Caoba(290),Maculis(10),Wayte(10),Paulte(19),Canshan(10),Coreno(20),	4	8	1

[Escriba aquí]

LACA033b	4	2019	378	Caoba(300),Maculis(10),Wayte(10),Paulte(20),Canshan(11),Curcho(24),Caoba(3)	4.2	8	1
LACA047a	4	2019	537	Pajulte 136, Canshan 171, Caoba 76, Baril 10, Wayte 102, Laurel 26, Duranillo 16	2.2	6	0.3
LACA050a	4	2019	557	Canshan 180, Cacate 47, Wayte 50, Coquillo 50, Caoba 7, Baril 182, Ramon 41	1.5	5	0.2
LACA053c	4	2019	332	Caoaba 115, Baril 132, Wayte 51, Pajulte 34, Ramon 16	2	3.5	0.58
LACA058a	4	2019	599	Baril 532, Guayte 7, Caoba 26, Canshan 25, Pajulte 6, Ramon 3	2.74	3.5	0.8
LACA058b	4	2019	606	Caoba 243, Baril 362, Pino 1	1.88	2.7	1.1
LACA067b	4	2019	652	Baril 314, Caoba 236, Pajulte 32, Cedrillo 21, Cansahn 38, Cacate 5, Cedro 6	1.57	3.2	0.6
LACA181b	3	2019		Baril 201, Caoba 80, Roble 28, Ramon 48, Laurel 22, Pajulte 11, Duraznillo 60, 3	1.36	5	0.5
LACA181b	3	2019	517	Baril 171, Caoba 77, Duraznillo 67, Ramon 57, Roble 43, Laurel 30, Canshan 15, Canol'Te 7, Guayte 3	3.08	4.5	1
LACA193a	5	2019	503	Baril 282, Pajulte 32, Caoba 144, Pino 26, Malamujer 7, Paterna 3, Mango 5, Canshan 4	3.24	4.5	1
LACA195a	4	2019		Baril 205, Guayte 60, Caoba 120, Ramon 56, Canshan 46, Pumarosa 1, Pajulte 12, Sin Nombre 120	1.5	4	0.5
LACA195a	4	2019	582	Baril 180, Caoba 46, Ramon 49, Canshan 41, Pajulte 54, Cedrillo 40, Wayte 49. Palo Rosa 2	1.55	4	0.5

[Escriba aquí]

LACA203a	5	2019	371	Baril 166, Duraznillo 13, Caoba 116, Cedro 8, Pajulte 46, Guayte 17, Pino 5	3.9	6	1.5
LACA208c	4	2019	517	Baril 435, Guayte 27, Cedro 23, Canshan 26, Cacate 6	1.42	2	1
LACA214b	4	2019	508	Caoba 430, Baril 42, Cacate 29, Zapote 6, Encino 1	2.54	4.6	1
LACA216b	4	2019	611	Caoba 294, Baril 165, Wayte 60, Cedro 15, Duraznillo 59, Pimiento 4, Cacate 5, Laurel 7, Corcho Negro 2	2.7	7	0.2
LACA218b	4	2019	645	Caoba 351, Canshan 108, Ramon 38, Baril 73, Pajul Te 56, Guayte 12, Cedrillo 7	1.66	2.5	0.6
LACA220b	3	2019	551	Caoba 521, Cedro 12, Baril 13, Chalum 5	3.28	5.3	1.5
LACA224c	4	2019	509	Caoba 126, Baril 342, Ramon 23, Guayte 14, Canshan 4	2.08	3.8	1
LACA226c	4	2019	369	Baril 341, Caoba 22, Duraznillo 2, Canshan 4	0.84	1.8	0.3
LACA231a	4	2019	560	Caoba 302, Baril 127, Duraznillo 132, Pajulte 4, Palo Mulato 4	2.2	5	0.27
LACA236a	4	2019	423	Baril 232, Caoba 151, Canshan 33, Ramon 6, Mango 1	2.22	5	1
LACA237b	4	2019	540	Baril 502, Laurel 38	0.98	1.5	0.5
LACA293a	4	2019	171	Maculis 18, Caoba 143, Cedro 3, Baril 7	0	6	3
LACA294a	2	2019	0	Sin Planta	0	0	
LACA295a	3	2019	51	Caoba 40, Cedro 9, Nogal 1, Aguacate 1	0	0	0
LACA296a	3	2019	80	Cedro 10, Pi 1, Maculis 1, Caoba 68	0	0	0
LACA297a	2	2019	38	Baril 6, Caoba 20, Cedro 1, Guanacastle 11	0	0	0

[Escriba aquí]

LACA298a	4	2019		Caoba 304, Cedro 155, Maculis 15, Nogal 44, Ramon 42	6	10	0.5
LACA298a	4	2019	570	Caoba 300, Maculis 18, Nogal 34, Cedro 180, Baril 8, Ramon 30	10	10	4
LACA299a	5	2019	526	Cedro 367, Caoba 114, Maculis 8, Laurel 16, Baril 21,	7.4	12	0.75
LACA301a	5	2019	606	Cedro 285, Caoba 180, Baril 110, Maculis 31	9.3	15	2.5
LACA302a	4	2019		Caoba 262, Maculis 94, Cedro 107, Baril 43	10.4	15	1
LACA302a	4	2019	500	Cedro 120, Caoba 234, Baril 46, Maculis 100	0	11	1.5
LACA310a	3	2019	510	Cedro 72, Guanacaste 54, Maculis 11, Baril 113, Caoba 200, Nogal 60	7.4	12	5
LACA333b	3	2019	540	Caoba 332, Baril 153, Ramon 16, Guayte 27, Canshan 12	3.78	5.2	1.5
LACA354a	4	2019	97	Pajulte 37, Canshan 22, Baril 18, Wayte 13, Caoba 7	0	0	0
MOBE011d	2	2019	66	Cipres 66	3.55	2	0.56
MOBE011e	2	2019	501	Cipres 308, Liquidambar 6, Caña De Ardilla 176, Palo Blanco 4, Lengua De Vaca 2, Criandero 3. Palo Brujo 1, Aguacatillo 1	5.5	1.87	0.2
MOBE011f	2	2019	76	Cipres 2, Cipres De Montaña 13, Caña De Ardilla 6, Zapotillo 2, Maquiado 2, Liquidambar 32, Chalum Colorado 8	12	0.9 3	0.13
REBI001a	4	2019	204	Cedro 13, Macheton 3, Bojom 60, Pimienta 8, Darasnillo 18, Pomte E 23, Cedrillo 12, Palo De Humo 33, Cola De Pava 7, Hormiguillo 13, Aguacatillo 3, Uña De Pajaro 11,	1.94	4	0.46

[Escriba aquí]

REBI002a	4	2019	169	Cedr0 115, Caoba 6, Cedrillo 10,Hormiguillo 18, Bojom 15, Maculis 5,	6	9	0
REBI003a	4	2019	208	Cedrillo, Durasnillo, Bojom,Cedro, 208,	2.42	3.6	1.2
REBI003b	3	2019		Duraznillo 38, Hormiguillo 53, Bojom 27, Cedrillo 44, Cedro 21, Maculis 1	0.6	3.0 5	0.3
REBI003b	3	2019	198	Durasnillo 43, Hormiguillo 44, Bojom 31, Cedrillo 45, Cedro 26, Maculis 1, Cola De Pava 3, Pimienta 2, Palo De Humo 3, Jolcin 3	0.92	2.1	0.27
REBI004a	4	2019	199	Pimienta 20, Bojom 28, Cedro 48, Cedrillo 52, Hormiguillo 13, Maculis 32, Duraznillo 2, Pomte 4	2.18	5.6	0.43
REBI005a	3	2019	193	Maculis 37, Bojom 32, Cedro 123,	0.85	3.2	0.8
REBI006a	4	2019	89	Bojom 65, Cedrillo 10, Cedro 6, Hormiguillo 8,	2.4	4.1	0.6
REBI007a	4	2019		Cedro 201, Bojom 35, Maculis 17, Aguacatillo 11, Cola De Pava 9, Cedrillo 11, Caoba 8, Ramon 1, Pimienta 2	2	6.0 5	1
REBI007a	4	2019	233	Cedro 143, Bojom 38, Cedrillo 30, Duraznillo 3, Escobillo 3, Macheton 4, Maculis 5, Amarillo 1, Pimienta 2, Mescal 2, Copalillo 1	3.99	6	0.95
REBI007b	3	2019	236	Cedro 14, Bojom 31, Durasnillo 68, Cedrillo 51, Aguacatillo 14, Pomtee 22, Copalillo 23, Pimienta 14	2.52	4.2 5	0.57
REBI008a	4	2019	305	Caobilla 3, Cedro 23, Pimienta 7, Durasnillo 31, Maculis 10, Cedrillo 43, Bojom 40, Hormiguillo 9, Copalillo 3, Macheton 1 ,	4.04	8.6	0.47
REBI008b	3	2019	639	Cedro, Hormiguillo, Primavera, Naranjillo, Bojom, Cola De Pava, Maculis, Cedrillo,	2.11	6.5	0.1

[Escriba aquí]

REBI009a	4	2019	613	Cedro, Uña De Pajaro, Bojom, Amenedu, Chalum, Cedrillo, Durasnillo, Mulato, Palo De Humo, Escobillo, 613,	2.36	5	1.13
REBI010a	3	2019	191	Cedro 58, Maculis 1, Bojom 105, Macheton 2, Aguacatillo 2, Hormiguillo 4, Pimienta 1, Cedrillo 6, Chalum 6, Durasnillo 4, Cola De Pava 1, Palo De Humo 1,	2.46	4.9	0.67
REBI011a	4	2019	931	Cedro 665, Macuil 265	0.46	0.6	0.3
REBI011b	4	2019	465	Cedro 465	0	4	1.3
REBI011c	4	2019	560	Cedro 282, Maculis 285	0	3	0.7
REBI012a	4	2019	239	Cedro 239	1.39	3.6	1.3
REBI012b	3	2019	235	Cedro235	0	4	1.34
REBI013a	4	2019	550	Cedro 550	0	3	1
REBI014a	4	2019	275	Cedro 280	0	3	1
REBI014b	3	2019		Cedro 300, Primavera 52	1.54	1	0.2
REBI014b	3	2019	275	Cedro 275	0	3	1.5
REBI015a	4	2019	528	Cedro 532	0	3	0.79
REBI015b	3	2019	306	Cedro 261, Maculis 35, Primavera 10	0.8	3	0.5
REBI016a	3	2019	205	Cedro 205	0	2	0.7
REBI017a	3	2019	230	Cedro 235	0	2.9	1
REBI017b	4	2019	205	Cedro 215	0	3	1

[Escriba aquí]

REBI017c	4	2019	280	Cedro280	0	2	1.8
REBI017d	4	2019		Cedro 105, Maculis 60	1	2	0.5
REBI017d	4	2019	205	Cedro 205	0	2	1.5
REBI018a	3	2019	400	Cedro 400	0	3	1
REBI019a	4	2019	396	Cedro 396	0	3	1.5
REBI027a	3	2019	72	Bojom 50, Matilisguate 4, Palo De Humo 18,	0.42	0.5 7	0.24
REBI028a	3	2019	255	Bojom 180, Cola De Pava 30, Cedrillo 45,	0.7	1.1	0.23
REBI028b	3	2019	148	Bojon 88, Cedro 15, Maculis 5, Voladora 29, Cola De Pava 5, Palo De Humo 3, Cafesillo 2, Frijolillo 1	1.02	1.58	0.51
REBI029a	3	2019	436	Bojom 340, Cedrillo 5, Cola De Pava 2, Cedro 34, Hormiguillo 2, Frijolillo 17, Copalillo 31,	1.02	1.68	0.45
REBI030a	3	2019	150	Bojom 150	1.55	2.5	0.98
REBI031a	3	2019	295	Bojom 140, Cedro 110, Planta Nuava 11, Cedrillo 27, Frijolillo 7,	0.37	0.7 8	0.1
REBI033a	3	2019	178	Bojom 71, Durasnillo 9, Hormiguillo 3, Pimienta 25, Cedrillo 7, Escobillo 1, Cedro 20, Aguacatillo 7, Copalillo 10, Cola De Pava 10, Pom Tee 6, Maculis 9,	7.6	4.4	0.12
REBI033b	2	2019	286	Bojom 138, Cola De Pava 33, Cedro 59, Maculis 57,	0.65	1.7	0.2
REBI034a	3	2019	2499	Cedro 998, Jolocin 398, Bojom 1005, Frijolillo 98,	4.98	5	0.15

[Escriba aquí]



REBI035a	3	2019	297	Bojom 177, Cedro 120,	2.22	4.5	0.4
REBI036a	3	2019	95	Cedro 34, Bojom 15, Cedrillo 10, Maculis 15, Pom Tee 2, Macheton 6, Aguacatillo 1, Chalum 1, Primavera 11,	2.29	2.5	1.18
REBI037a	2	2019		Cedro 67, Cola De Pava 9, Cedrillo 4, Bojom 4, Pimienta 2, Volador 2, Copalillo 1, Caobillo 1	1.68	3.2	0.43
REBI037a	2	2019	92	Cedro 60, Primavera 3, Copalillo 3, Cola De Pava 9, Cedrillo 5, Bojom 8, Macheton 1, Durasnillo 3,	2.41	4.2	0.11
REBI038a	2	2019	89	Durasnillo 73, Cedrillo 10, Cedro 5, Pimienta 1,	1.78	3.9	0.22
REBI039a	3	2019	183	Bojom 134, Aguacatillo 6, Hormiguillo 2, Cedro 16, Frijolillo 2, Durasnillo 3, Caobilla 5, Macheton 15,	2.69	7	0.18
REBI040a	3	2019	1334	Cedro 593, Bojom 497, Macheton 103, Durasnillo 64, Maculis 77,	0	3.3	0.3
REBI041a	3	2019	2586	Cedro, Palo De Escobilla, Maculis, Hormiguillo, Primavera, Macheton, Pimienta, Cedrillo, Cola De Pava, Bojom, Mata Buey, Copal,	1.84	2.4	0.9
REBI043a	3	2019	65	Caobilla 40, Maculis 25	0	5	0.8
REBI045a	3	2019	162	Caobilla 125, Maculis 37	1.5	3.3 5	0.38
RFRA034c	4	2019	525	Cedro 210, Nanchi 6, Guash 3, Maculis 77, Matarraton 5, Mandarina 5, Mango 19, Chalum 53, Guachipilin 16, Chicharo 13, Naranja 5, Taray 70, Caoba 43,	4.92	7.2	0.23
RFRA036b	4	2019	572	Cedro 420, Pino 4, Hormiguillo 25, Caoba 16, Mango 10, Guachipilin 12, Taray 6, Matilisguate 46,	2.64	25	0.95

[Escriba aquí]

RFRA038b	4	2019	515	Cedro 420 ,Guachipilin 20 , Matilisguate 15 , Pino 7 , Caobilla 50 , Limon 3 ,	1.53	25	0.48
RFRA039b	4	2019	493	Cedro 133, Guachipilin 65, Maculis 14, Jocotillo 6, Capulin 21, Hormiguillo 42, Mataguey 12, Caspirol 3, Matarraton 33, Caulote 11, Caoba 12, Chalum 23,	5.04	11.1	0.5
RFRA040b	4	2019	602	Guachipilin 75, Caoba 25, Pochota 2, Matilisguate 40 , Cedro 300, Caulote 60	3.93	18	3
RFRA041b	4	2019	532	Cedro 191, Maculis 125, Capulin 11, Mataguey 41, Guanacaste 10, Granadillo 5, Caspirol 10, Caulote 20, Hormiguillo 17, Ceiba 2, Guachipilin 55,Mango 8, Guash 17, Chalum 12,	6.1	15.2	0.6
RFRA043b	4	2019	387	Maculis 93, Caoba 6, Guachipilin 64, Cedro 116, Aguacate 8, Guash 7, Matarraton 23, Macheton 17, Mango 22, Hormiguillo 19, Caulote 2,	4.36	9	1.22
RFRA043b	4	2019		MATILISGUATE 96, Chalum 35, Hormiguillo 8, Mata Ratón 22, Caspirola 33, Caulote 24, Guachipilin 136, Mango 32, Aguacate 20, Cedro 180, Granadillo 12, Was 68	6.6	8	0.9
RFRA048a	4	2019	602	Cedro 300, Mango 8, Guash 8, Maculis 90, Ormiguillo 55, Papausa 10, Guachipilin 29, Macheton 9, Mataraton 48, Aguacate 3, Caoba 42,	4.44	8	0.27
RFRA049b	4	2019		Cedro 420, Maculis 68, Caoba 1, Hormiguillo 17, Primavera 1, Guachipilin 47, Pochota 2, Chalum 42, Aguacate 2, Nanchi 1, Mataraton 35	12	15	0.94
RFRA049b	4	2019	554	Cedro 360, Pochota 2, Matilisguate 71, Chalum 53, Guachipilin 47, Primavera 1, Caulote 4, Hormiguillo 13, Aguacate 3,	3.9	20	0.57

[Escriba aquí]

RFRA052b	4	2019	685	Cedro 94, Matilisguate 101, Caulote 96, Aguacate 70, Mataraton 102, Guachipilin 53, Chalum 13, Chichalaco 37,	5.1	7	0.6
RFRA057c	4	2019	787	CEDRO 300, GUANACASTLE 8, AGUACATE 8, MACHETON 28, CAOBA 59, NARANJA 13, GUANABANA 18, GUACHIPIILIN 39, MATARATON 88, Maculisí 108, CORNICUIL 45 LIMON 81	14.2	16	1.23
RFRA058c	4	2019		Caoba 32, Maculis 72, Matawey 53, Caulote 8, Guachipilin 24, Guanacastle 4, Cedro 96, Nim 28, Mataraton 124, Hormiguillo 102	15	17	1.1
RFRA058c	4	2019	551	Hormiguillo 111, Maculis 72, Matawey 54, Caulote 7, Guachipilin 25, Guanacastle 4, Cedro 96, Nim 29, Mataraton 122, Caoba31, Amate 8	14.4	17	0.2
RFRA062b	3	2019	406	Guanacastle 58, Matilisguate 177, Guachipilin 9, Cedro 113, Hormiguillo 6, Chalum 6, Mataraton 4, Cuero De Toro 28, Algodoncillo 3	2.04	6	0.4
RFRA068a	1	2019	180	Caob 6, Macheton 1, Caulote 1, Matilisguate 52, Jocote 1, Cedro 105, Matarraton 11, Limon 3,	0.5	5.2 3	0.1
RFRA069a	3	2019	233	Cedro 70, Mandarina 1, Jacaranda 22, Maculis 6, Braboyan 3, Nanchi 5, Jocote 1, Ceiba 1, Matarraton 7, Limon 50, Pino 12, Guash 12, Mataguey 20, Naranja 3, Caoba 17, Mulato 3,	0.62	4.1	0.15
RFRA076a	4	2019		Caoba 172, Caspirola 89, Nispero 31, Capulin 179, Naranja 31, Pumarosa 26, Aguacate 93, Taray 173, Yaca 8, Chichalaco 46	3.59	7.2 6	0.93
RFRA076a	4	2019	824	Caspirola 93, Caobilla 172, Naranja 32, Nispero 31, Capulin 177, Pumarosa 24, Yaca 9, Aguacate 93, Taray 171, Chichalaco 47	4.16	6.5	0.86

[Escriba aquí]

RFRA092c	2	2019	1133	Cedro 643, Maculis 424, Wash ,22, Primavera 17 Gunacaste 4, Cinco Negritos 9, Platanar 14,	1.16	1.95	0.23
RFRA101b	3	2019	555	Maculis 234, Framboyan 48, Cedro 179, Hormiguillo 94	0.5	1.63	0.11
RFRA108a	4	2019	528	Cedro 174, Capulin 45, Maculis 153, Guachipilin 43, Jocote 1, Naranja 23, Caoba 27, Mataraton 12, Guanabana 14, Aguacate 2, Mandarina 5, Limon 20,	2.3	12.2	0.3
RFRA109a	4	2019	746	Pino 180, Cedro 173, Mandarina 8, Caoba 43, Limon 180, Maculis 90, Guanabana 37, Mataraton 9, Aguacatillo 3, Chincuya 23	4.4	7	0.35
RFRA111a	4	2019	394	Granadillo 104, Aguacatillo 146, Taray 37, Guachipilin 13, Cedro 6, Pino 38, Caspirola 27, Chalum 23,	2.96	5	0.4
RFRA112a	3	2019	318	Pino 180, Pimientillo 28, Aguacatillo 19, Trompito 23, Taray 16, Granadillo 12, Chalum 21, Caspirola 19,	3.93	5.2	0.7
RFRA113a	4	2019	514	Cedro 196, Maculis 240, Caoba 13, Pino 1, Matarraton 4, Guachipilin 60,	0.84	3.8 6	0.1
RFRA114a	4	2019	560	Cedro 322, Maculis 184, Taray 2, Guachipilin 52,	0.9	4.5	0.15
RFRA115a	4	2019	565	Maculis 142, Cedro 151, Encino 104, Pino 120, Mataguey 48,	0.99	4.21	0.47
RFRA116a	4	2019	585	Pino 249, Encino 204, Maculis 84, Cedro 48,	0.66	3.8 4	0.09
RFRA117a	4	2019	608	Cedro 473, Pino 15, Maculis 114, Aguacatillo 4, Guapinol 2,	0.99	3.5 7	0.3
RFRA118a	4	2019	565	Cedro 193, Ocote 24, Maculis 210, Caoba 29, Guachipilin 109,	0.87	3.4 8	0.15

[Escriba aquí]

RFRA119a	4	2019	599	Maculis 134, Pino 48, Caspirola 2, Cedro 409, Matarraton 2, Guapinol 4,	0.95	4.5 8	0.29
RFRA120a	4	2019	670	Maculis 468, Cedro 151, Guachipilin 50, Caoba 1,	1.04	5.1	0.12
RFRA121a	3	2019	416	Cedro 330, Matilisguate 86,	1.71	2.4 5	0.3
RFRA122a	4	2019	515	Cedro 179, Matilisguate 113, Caspirola 81, Taray 42, Guachipilin 41, Mataguey 28, Wash 22, Pino 9,	1.81	2.1	0.5
RFRA123a	3	2019	520	Cedro 262, Matilisguate 76, Mango 4, Yuca 6, Nanchi 21, Mataguey 22, Ciruela 23, Caspirola 18, Platano 12, Naranja 17, Mandarina 27, Durazno 32,	1.45	2.1	0.4
RFRA124a	4	2019	611	Cedro 352, Matilisguate 190, Quebracho 9, Mataguey 29, Aguacate 4, Platano 7, Nanchi 14, Matarraton 6,	1.29	2	0.55
RFRA125a	3	2019	596	Cedro 270,Pino 217, Matilisguate 56,Caoba 53,	0	1.2	0.2
RFRA126a	4	2019		Pino 266, Cedro 49, Taray 2	0.87	1.62	0.11
RFRA126a	4	2019	424	Pino 424, Cedro 2,	0.63	0.7	0.27
RFRA127a	4	2019	602	Maculis 60, Caoba 76, Cedro 295, Pino 161, Guanacaste 3,	0.77	1.7	0.2
RFRA128a	4	2019	561	Cedro 270, Matilisguate 181, Pino 1, Caoba 108, Guanabana 1,	0.47	2.1	0.15
RFRA129a	3	2019	560	Cedro 282, Matilisguate 272,	1.81	2.4 8	0.2
RFRA130a	4	2019	500	Cedro 278, Pino 90, Matilisguate 132,	1.75	2.5	0.2

[Escriba aquí]

RFRA131a	4	2019	435	Cedro 272, Matilisguate 135, Pino 21, Caoba 6, Framboyan 1,	1.35	3.8	0.5
RFRA132a	4	2019	761	Pino 747 , Mataguey 8, Cedro 6,	1.23	1.2	0.5
RFRA133a	3	2019	585	Pino 269, Wamuchil 1, Chincuya 11, Cedro 132, Matilisguate 69, Wash 8, Ciruela 10, Mataraton 16, Limon Persa 3, Caoba 66,	1.89	6	0.45
RFRA134a	3	2019	489	Cedro 139, Muju 88, Caoba 6, Maculis	3.28	6.5	1.15
RFRA135a	4	2019	492	Malisguate 143, Cedro 90, Pino 227, Caspirola 18, Mataguey 8,	2.21	4	0.45
RFRA136a	3	2019	404	Cedro 174, Chinculla 1, Maculis 187, Primavera 2, Caoba 19, Guanacaste 1, Granadillo 11, Guanabana 3, Papausa 6, Hormiguillo 1,	0.71	3.2 3	0.15
RFRA137a	2	2019	569	Cedro 240 ,Moringa 15, Hormiguillo 20 , Matilisguate 150, Mataraton 50, Primavera 20, Guash 35, Caulote 35, Limon 3	1.51	25	0.5
RFRA138a	2	2019	475	Cedro 231, Maculis 142, Guachipilin 4, Primavera 43, Branboyan 29, Guash 11, Caoba 2, Mango 1, Naranja 2, Taray 1, Chalum 9,	0.76	5.4	0.12
RFRA139a	2	2019		Maculis 166, Cedro 118, Guachipilin 17, Guanacastle 16, Wash 16, Taray 18, Jacaranda 4, Macheton 6, Mango 5, Primavera 11, Granadillo 2, Mataraton3, Muju 3	1.6	2	0.3
RFRA139a	2	2019	748	Cedro 207, Maculis 23, Wash 360, Capulin 33 ,Primavera 12, Taray 3, Jacaranda 60,	0.68	1.55	0.13
RFRA140a	2	2019	416	Guanacaste 98, Cedro 131, Maculis 187,	0.44	0	0.08
RFRA141a	2	2019	402	Cedro 178, Naranja 2, Maculis 117, Limon 4, Capulin 2, Taray 3, Zapotillo 10, Caulote 8, Mataguey 6, Wash 33, Hormiguillo 21, Primavera	0.86	1.5	0.15

[Escriba aquí]

RFRA142a	2	2019	415	Maculis 133, Cedro 208, Guanacaste 74,	0.54	0	0.06
RFRA143a	2	2019	606	Cedro 284 Maculis 244, Rambutan 49, Guanacaste 29,	0.96	1.2	0.22
RFRA144a	2	2019	116	Pino 102, Maculis 7, Cedro 7,	0.74	1.85	0.23
RFRA145a	2	2019	1100	Cedro , Matilisguate ,1100	0.47	4	0.48
RFRA146a	1	2019	860	Matisguate ,Cedro ,Rambutan ,860	1.2	15	0.37
RISE038a	4	2019	76	Pino 76	3.15	6.7 5	0.67
RISE046a	4	2019	93	Guachilipin(42),Maculis(18),Cedro(6),Teca(6),Primavera(21)	6.6	10.2 7	2.43
RISE176a	6	2019	58	Maculis 3, Cedro 35, Nogal 5, Taray 7, Caoba 1, Ceiba 1, Guachipilin 6	1.15	2.41	0.46
RISE294a	5	2019	81	Cedro(29),Guachipilin(3),Guah(14),Guanacaste(9),Bojon(8),Caobillo(8),Maculis(5)	5.26	7.19	1.62
RISE296a	5	2019	79	Maculis(59),Taray(12),Guanacaste(2),Caobilla(2),Duraznillo(4)	3.09	5.21	0.83
RISE300a	5	2019	73	Cedro(11),Maculis(56),Caobilla(6)	2.33	4	0.6
RISE324a	2	2019	83	Pino 5, Cedro 54, Maculis 9, Guachipilin 3, Taray 8, Nogal 4	1.27	3.0 5	0.37
RISE336a	4	2019	117	Maculis 72, Cedro 24, Aguacatillo 3, Guachipilin 2, Cote 13, Hormiguillo 3	1.15	4.2 5	0.13
TOJ159a	5	2019	623	Cipres 619, Pino 4	4.86	6	0.28

[Escriba aquí]

TOJ159b	4	2019		Cipres 10, Pino 5, Roble 34, Chiquinib 4	4.46	5.6	0.12
TOJ159b	4	2019	75	Cipres 16, Pino 6, Roble 42, Chiquinib 11	4.3	4.7 2	0.09
TOJ159c	3	2019	42	Cipres 12, Pino 9, Roble 21	3.43	5	0.07
TOJ159d	3	2019	123	Cipres 9, Pino 1, Roble 113	3.47	4	0.15
TOJ159e	2	2019	89	Cipres 17, Pino 2, Roble 65, Chiquinib 5	4.52	4.2	0.1
TOJ159f	2	2019	66	Cipres 10, Pino 6, Roble 30, Chiquinib 20	2.6	5.5	0.05
TOJ159g	2	2019	1159	Cipres 1023, Pino 30, Roble 57, Encino 49	0	0.5 7	0.09
TOJ160a	5	2019		Cipres 41, Pino 4, Roble 4	3.54	5.6	0.15
TOJ160a	5	2019	61	Cipres 54, Pino 5, Roble 2	3.24	5.5	0.11
TOJ161a	5	2019	605	Cipres 592, Pino 12, Cazoarina 2	4.4	7.8	0.08
TOJ161b	4	2019	126	Pino 39, Cipres 14, Roble 70, Chiquinib 3	4.21	6.7	0.1
TOJ161c	3	2019	481	Cipres 376, Pino 105	3.66	7.5	0.09
TOJ162a	5	2019	585	Pino 315, Cipres 270	3.57	5	0.15
TOJ162b	4	2019	590	Cipres 320, Pino 270	3.66	5.2	0.15
TOJ163a	5	2019	481	Cipres 425, Pino 56	5.34	7	0.28
TOJ163b	4	2019	522	Cipres 358, Pino 164	3.5	7.9	0.08

[Escriba aquí]



TOJ164a	5	2019	220	Cipres 190, Pino 30	0	5	0.07
TOJ165a	5	2019	73	Cipres 32, Pino 25, Roble 16	3.31	6	0.13
TOJ165b	3	2019	132	Roble 74, Chiquinib 19, Pino 13, Cipres 26	3.09	4.5	0.03
TOJ166a	5	2019	683	Cipres 344, Pino 138, Encino 63, Roble 28, Chiquinib 10	4.96	7	0.09
TOJ166b	4	2019	79	Cipres 37, Pino 8, Roble 34	4.7	9	0.17
TOJ167a	5	2019	549	Cipres 535, Pino 14	4.11	6.5	0.2
TOJ167b	4	2019	265	Cipres 225, Pino 40	3.09	4.5	0.09
TOJ168a	4	2019	110	Cipres 22, Pino 12, Roble 62, Chiquinib 14	4.37	5	0.12
TOJ169a	4	2019	140	Pino 11, Cipres 17, Roble 52, Chiquinib 60	4.89	5.3	0.05
TOJ170a	4	2019	423	Pino 50, Cipres 314, Roble 59	2.78	5.5	0.04
TOJ171a	4	2019	29	Cipres 21, Pino 6, Roble 2	2.31	2.6 4	0.86
TOJ171b	2	2019	54	Pino 6, Roble 31, Chiquinib 17	3.9	4.9	0.17
TOJ172a	4	2019	355	Cipres 164, Pino 91	3.19	4.3	0.05
TOJ173a	4	2019	83	Cipres 34, Pino 6, Roble 5, Chiquinib 38	3.28	4.5	0.15
TOJ174a	4	2019	594	Cipres 458, Pino 108, Roble 28	2.74	6.5	0.05
TOJ174b	3	2019	154	Cipres 56, Pino 6, Chiquinib 53, Roble 29	4.28	6	0.04
TOJ175a	4	2019		Cipres 33, Pino 10, Roble 14, Chiquinib	3.27	3.8	0.1

[Escriba aquí]

TOJ175a	4	2019	107	Cipres 34, Pino 9, Encino 64	3.3	3.0 9	0.12
TOJ176a	4	2019		Cipres 28, Pino 4, Chiquinib 3, Roble 6	5.22	6	0.1
TOJ176a	4	2019	43	Cipres 34, Pino 4, Encino 5	5.23	6.3	0.05
TOJ176b	2	2019	174	Cipres 125, Pino 16, Roble 32, Chiquinib 1	1.33	4.8	0.17
TOJ177a	4	2019	469	Cipres 315, Pinos 126, Robles 17, Chiquinib 11	3.47	4.7 2	0.1
TOJ178a	4	2019	32	Cipres 12, Pino 7, Roble 13	1	1.2	0.16
TOJ179a	4	2019	61	Cipres 28, Pino 22, Roble 9, Chiquinib 2	3	4.4	0.15
TOJ180a	4	2019	739	Cipres 594, Pino 145,	1.24	1.7	0.62
TOJ181a	4	2019	476	Cipres 360, Pino 116,	2.83	3.4	0.2
TOJ182a	4	2019	900	Cipres 590, Pino 330	1.33	2.2	0.95
TOJ183a	4	2019	441	Cipres 441, Pino 66,	1.96	3	1.16
TOJ183b	4	2019	129	Cipres 124, Pino 5,	3.02	5	1.6
TOJ184a	4	2019	370	Cipres 302, Pino 68,	1.65	2.3	1
TOJ184b	4	2019	378	Cipres 358, Pino 20,	2.57	5.7	1.2
TOJ185a	4	2019	1012	Cipres 719, Pino 293,	1.18	1.87	0.15
TOJ186a	4	2019	611	Cipres 508, Pino 103,	1.7	2.5	0.4

[Escriba aquí]

TOJ186b	4	2019	185	Cipres 179, Pino 6,	1.56	2.15	0.94
TOJ186c	2	2019		Cipres 148, Cedro 6, Chiquinib 1, Pino 8	1.14	5	0.34
TOJ186c	2	2019	188	Cipres 180, Pino 8,	1.58	2.6	0.3
TOJ186d	2	2019	193	Cipres 110, Pino 83,	1.76	3.7	0.2
TOJ187a	3	2019	251	Cipres 251, Pino 36,	2.78	4.7	1.6
TOJ188a	3	2019	497	Cipres 435, Pino 62,	1.68	4.8	0.58
TOJ189a	2	2019	220	Cipres 220,	0.68	0.8 5	0.5
TOJ189b	2	2019	268	Cipres 230, Pino 38,	1.28	2.5	0.7
TOJ194a	2	2019	290	Cipres 290	1.72	2.3	0.8
TOJ195a	2	2019	263	Pino 68, Cipres 195	0.356	0.6 5	0.25
TOJ196a	2	2019	141	Pinos 125, Cipres 16	0.55	0.6 5	0.36
TOJ196b	2	2019	150	Cipres 140, Pinos 10	0.82	1.3	0.4
TOJ197a	2	2019	209	Cipres 23, Frenoz 7, Pinos 179	0.19	0.5	0.3
TOJ198a	2	2019		Cipres 77, Pino 74, Roble 18, Chiquinib, 44	4.22	6.2	0.12

[Escriba aquí]

TOJ198a	2	2019	1663	Cipres 623, Pino 501, Roble 372, Chiquinib 167	3.772 8205 1	7.5	0.1
VILA001a	4	2019	144	Primavera 12, Caobilla 34, Cedro 92,Maculis 1,	1.65	2.2	0.5
VILA001b	3	2019	432	Cedro 406, Primavera 4, Maculis 8, Granadillo 1, Pajarito 5 Hormiguillo 4, Cola De Pava 4,	1.59	1.9	0.18
VILA002a	4	2019	220	Cedro 156, Guanacaste 7, Caobilla 46, Hormiguillo 6, Cola De Pava 1, Pajarito 4,	3.67	4.5	0.5
VILA003a	4	2019	199	Pajarito 44, Cedro 111, Matiliguaste 11, Granadillo 2, Cola De Pava 5, Guanacaste,25	1.92	2.4 6	0.23
VILA003b	3	2019	159	Cedro 138, Pajarito 15, Cola De Pava 3, Hormiguillo 3,	1.82	2.3 3	0.14
VILA004a	4	2019	433	Cedro 215, Hormiguillo 58, Granadillo 54, Frijolillo 1, Fresno 1, Matiliguaste 1, Guanacaste 42, Pajarito 64,	2.8	2.8 3	0.5
VILA005a	4	2019	126	Cedro 72, Primavera 7,Hormiguillo 4, Caobilla 23, Cola De Pavo 1, Durasnillo 12, Pimienta 6,	1.37	1.44	0.56
VILA007a	4	2019		Cedro 53, Primavera 20, Hormiguillo 40, Maculis 5, Caobilla 23, Cola De Pava 1,	2.22	2.8	1.6
VILA007a	4	2019	128	Primavera 17, Cedro 51, Hormiguillo 50, Maculis 10,	2.07	2.7	0.26
VILA008a	4	2019	282	Caobilla 82, Pimienta 1, Cedro 120, Cola De Pava 13, Guanacaste 23, Matiliguaste 9, Pajarito 29, Granadillo 1, Frijolillo 1, Hormiguillo 1,	1.74	2.8	0.24

[Escriba aquí]

VILA009a	4	2019	408	Cedro 150, Caobilla 112, Pajarito 60, Primavera 39, Hormiguillo 21, Guanacaste 24, Frijolillo 1,	2.48	2.8 5	0.2
VILA010a	4	2019	126	Maculis 65, Cedro 22, Primavera 7, Hormiguillo 4, Pajarito 28	2.71	3.5 7	0.54
VILA020a	3	2019	123	Cedro 90, Duraznillo 1, Caobilla 23, Hormiguillo 1, Primavera 1, Granadillo 1, Pajarito 2, Maculis 2, Cola De Pava 2	1.69	1.8	0.5
VILA021a	3	2019	351	Maculis 51, Bojon 76, Cedro 161, Frijolillo 16, Hormiguillo 24, Cola De Pava 8, Guanacastle 13, Chinine 1, Aguacate 1,	6.66	8	5.5
VILA022a	3	2019	313	Cedro 60, Bojon 99, Guanacastle 11, Frijolillo 18, Chinini 1, Maculis 51, Hormiguillo 73	2.84	3.5	2
VILA022b	3	2019	379	Cedro 60, Maculis 62, Cola De Pava 1, Duraznillo 3, Chinini 3, Hormiguillo 114, Bojon 81, Guanacastle 42, Frijolillo 11	3.36	4.5	2.5
VILA023a	3	2019	211	Cola De Pava 7, Caobilla 3, Hormiguillo 14, Cedro 52, Maculis 42, Frijolillo 12, Bojon 76, Guanacastle 3, Chinini 2	4.8	5.2	2.5
VILA024a	3	2019		Bojon 108, Cedro 80, Cola De Pava 26, Hormiguillo 23, Frijolillo 15, Matilisguate 20, Guanacastle 10, Chinini 3	3.76	4.4	3.2
VILA024a	3	2019	269	Bojon 102, Maculis 22pimienta 1, Frijolillo 14, Cedro 76, Chinini 3, Cola De Pava 22, Hormiguillo 20, Guanacastle 9	5.3	6.5	4.5
VILA026a	3	2019	307	Bojon 89, Cedro 136, Hormiguillo 40, Frijolillo 16, Cola De Pava 9, Guanacastle 14, Chinini 2, Maculis 1	3.6	4.5	3
VILA027a	3	2019	158	Maculis 19, Frijolillo 15, Bojon 44, Hormiguillo 35, Cedro 34, Chinini 3, Cola De Pava 6, Aguacate 1, Guanacastle 1	4.8	7.5	3

[Escriba aquí]

VILA028a	3	2019	167	Cedro 140, Bojom 15, Guanacaste 8, Maculis 1, Frijolillo 1, Chinino 2,	2.54	4	0.4
VILA029a	3	2019		Cedro 228, Cedrillo8, Frijolillo16, Cola De Pava 2, Caoba 2, Zinikuy 6	0.5	5	0.1
VILA029a	3	2019	274	Cedro 272, Frijolillo 2,	1.12	2.8	0.1
VILA030a	3	2019	180	Bojom 50, Cedro 115, Maculis 7, Guanacaste 7, Frijolillo 1,	3.7	5	0.5
VILA031a	3	2019	70	Cedro 65, Bojom 5	3.35	5	0.4
VILA032a	3	2019	120	Chinino 15, Sapote Mamey 1, Cedro 68, Bojom 14, Guanacaste 4, Maculis 2, Frijolillo 1, Caova 2, Ramon 13	0.83	6	0.2
VILA033a	3	2019	96	Cedro 50, Bojom 13, Chinino 19, Maculis 8, Hormiguillo 4, Caova 2,	4.45	5	0.2
VILA034a	3	2019	129	Frijolillo 12, Cedro 72, Maculis 5, Guanacaste 9, Hormiguillo 6, Ramon 6, Chinino 1, Bojom 18	2.62	5	0.2
VILA035a	3	2019	87	Cedro 70, Chinino 17,	0.83	4	0.4
VILA036a	3	2019	137	Chinino 31, Cedro 63, Bojom 43,	0.58	1.1	0.2
VILA037a	3	2019	94	Cedro 60, Guanacaste 9, Bojom 21, Frijolillo 3, Chinino 1,	2.39	4	0.22
VILA038a	3	2019	135	Cedro 111, Bojom 9, Aguacatillo 7, Guanacaste 3, Chinino 2, Frijolillo 3,	1.28	1.95	0.4
VILA039a	3	2019	92	Cedro 50, Chinino 2, Pimienta 19, Bojom 16, Aguacatillo 5, Frijolillo 5,	3.37	4.3	0.3

[Escriba aquí]

VILA040a	3	2019	65	Primavera 9, Cedro 33, Maculis 10, Taray 7, Huitumbillo 3, Guachipilin 1, Pochota 1	5	2	0.7
VILA041a	3	2019	236	Huitumbillo 34, Matilisguate 146, Cedro 53, Bojon 3	0.96	0	0.09
VILA042a	3	2019	118	Matilisguate 68, Alacran 31, Huitumbillo 13, Bojon 6	1	0	0.25
VILA043a	3	2019	169	Matilisguate 140, Cedro 16, Alacran 13	2.8	1.32	0.2
VILA044a	3	2019	89	Cedro 46, Maculis 35, Cipres 2, Pajarito 6	7	1.32	0.14
VILA045a	3	2019	125	Bojon 87, Maculis 17, Primavera 8, Cedro 6, Hormiguillo 1, Guachipilin 1, Palo Rayado 1, Taray 1	1.93	1.04	0.16
VILA047a	3	2019	107	Frijolillo 6, Bojon 42, Hormiguillo 3, Cedro 48, Maculiz 1, Caobilla 3, Cola De Pava 3, Mataguey 1	1.24	2.5	0.4
VILA048a	3	2019		Cedro 120, Bojon 13, Aguacatillo 1	0.3	0.8	0.2
VILA048a	3	2019	132	Aguacatillo 1, Cedro 117, Bojon 14	0	0	0
VILA049a	3	2019	123	Cedros 119, Bojon 3, Cedrillo 1	0.73	1.25	0.3
VILA050a	3	2019	242	Bojon 88, Cedros 154	1.16	1.8	0.2
VILA051a	3	2019	273	Cedro 160, Hormiguillo 15, Cola De Pava 10, Chicozapote 6, Bojon 70, Pimienta 1, Chincuya 1, Frijolillo 10	1	1.5	0.2
VILA052a	3	2019	154	Cedro 129, Bojon 18, Chicozapote 4, Zapotillo 1, Cipres 1, Aguacate 1	0.7	1.1	0.3
VILA053a	3	2019	160	Cedro 90, Bojon 70	0.7	1.5	0.4

[Escriba aquí]

VILA054a	3	2019	148	Cedro 17, Bojon 92, Hormiguillo 6, Ramon 17, Caobilla 15, Chinine 1	1.26	2	0.3
VILA055a	3	2019		Cedro 74, Bojon 28, Ramon 19, Hormiguillo 4, Duraznillo 2, Caoba 2	0.6	0.9	0.1
VILA055a	3	2019	123	Cedro 73, Bojon 25, Hormiguillo 2, Cedrillo 3, Ramon 18, Caobilla 2	84	1.21	0.29
VILA055b	3	2019	98	Bojon 33, Caobilla 14, Cedro 13, Maculis 1, Cedrillo 1, Ramon 34, Ocotillo 1, Chingastillo 1	0.67	1.8	0.2
VILA056a	3	2019	150	Cedro 113, Bojon 4, Cola De Pava 19, Aguacate 10, Humo 2, Alacran 1, Cedrillo 1	0.47	1	0.2
VILA056b	3	2019	143	Hormiguillo 62, Cedro 16, Bojon 37, Colmena 4, Cola De Pava 7, Aguacate 1, Cedrillo 1, Humo 1, Ramon 13, Chinine 1	1.12	1.6	0.5
VILA057a	3	2019	138	Cedro 23, Caobilla 13, Ramon 67, Bojon 32, Palo Colmena 1, Humo 2	0.58	0.9	0.3
VILA058a	3	2019	141	Bojon 110, Cedro 2, Hormiguillo 16, Ramon 7, Caobilla 3, Cola De Pava 1, Cedrillo 2	1.12	2.1	0.3
VILA059a	3	2019	151	Bojon 57, Ramon 33, Chinine 4, Guanacastle 4, Caobilla 5, Palo Colmena 11, Hormiguillo 4, Cedro 24, Humo 5 Cola De Pava 4	0.78	2	0.2
VILA060a	3	2019	105	Cedro 60, Bojon 10, Ramon 4, Hormiguillo 15, Humo 5, Cedrillo 1 Cala De Pava 10	0.58	0.9	0.2
VILA061a	3	2019	198	Cedro 60, Bojon 55, Hormiguillo 35, Mulato 1, Chinine 15, Chingastillo 1, Palo Colmena 1, Ramon 30	0.75	1.28	0.3

[Escriba aquí]



VILA062a	3	2019	34	Cedro 21, Hormiguillo 3, Bojon 10	0.38	0.8	0.2
VILA064a	3	2019	154	Bojon 96, Ramon 40, Caobilla 7, Chinine 2, Cola De Pava 2, Cedro 6, Humo 1	0.56	0.9	0.2
VILA065a	3	2019	135	Bojon 31, Cedro 66, Ramon 2, Caobilla 6, Palo Colmena 19, Cola Depava 1, Humo 4, Guachipilin 6, Hormiguillo 2	0.56	1	0.3

[Escriba aquí]

## Annex 4. Report of sales made during the life of the project

Sales year	Vintage	Buyer	Total sold in CO2
2000	N/A	Future Forest (TCNC)	3,937
2001	N/A	Future Forest (TCNC)	1,835
2002	N/A	Future Forest (TCNC)	9,175
2002	N/A	Future Forest (TCNC)	7,340
1997	2002	FIA Foundation	20,185
1998	2002	FIA Foundation	20,185
1999	2002	FIA Foundation	20,185
2000	2002	FIA Foundation	20,185
2001	2002	FIA Foundation	20,185
2001	2002	FIA Foundation	12,099
2002	2002	FIA Foundation	20,185
2002	2002	Rexam	30
2002	2002	FIA Foundation	12,100
<b>Total up to 2002</b>			<b>167,626</b>
2003	2003	DFID-FRP	20
2003	2003	World Bank	4,455
2003	2003	FIA Foundation	32,284
<b>Total 2003</b>			<b>36,759</b>
2004	2004	Future Forest	7,000
2004	2004	DFID-FRP	175
2004	2004	World Bank	4,455
2004	2004	FIA Foundation	32,251

[Escriba aquí]

<b>Total 2004</b>			<b>43,881</b>
2005	2005	One world International	4
2005	2005	FIA Foundation	32,251
2005	2005	World Bank	4,455
2005	2005	Civil Society systems	21
2005	2005	Passion Organic	21
<b>Total 2005</b>			<b>36,752</b>
2006	2006	TCNC 2006a (Inv in GBP)	20,000
2006	2006	TCNC 2006b (Inv in GBP)	20,000
2006	2006	FIA Foundation	34,540
2006	2006	U&WE	2,569
2006	2006	Peak Leader UK Ltd	52
2006	2006	University of Aberdeen	20
2006	2006	U&WE	19
2006	2006	Peter Noorlander	5
2006	2006	Gillian Donald	4
<b>Total 2006</b>			<b>77,209</b>
2007	2007	Daniel Morell Ltd	550
2007	2007	Peter Wright	35
2007	2007	Expressohead coffee	30
2007	2007	U&WE	19,214
<b>Total 2007</b>			<b>19,829</b>
2008	2008	FIA Foundation	184
2008	2008	The Association for Tropical Biology and Conservation	201
2008	2008	FIA Foundation	4,900
2008	2008	It's the Planet	600

[Escriba aquí]

2008	2008	Reforestamos Mexico	1,000
2008	2008	U&WE	9,759
2008	2008	U&WE	3,940
2008	2008	Enviromarket	20
2008	2008	Camco International	10,000
2008	2008	Camco International	10,000
<b>Total 2008</b>			<b>40,604</b>
2009	2009	TSD Division of the CSTM/ University of Twente	15
2009	2009	PEMEX	40
2009	2009	EmilCeramica	125
2009	2009	PIQGO	50
2009	2009	U&WE	1,500
2009	2009	U&WE	1,886
2009	2009	FIA Foundation	200
2009	2009	Antonio Canto	3
2009	2009	CO 2 focus	2,200
2009	2009	Save the Planet	50
<b>Total 2009</b>			<b>6,069</b>
2010	2010	U&WE	3,002
2010	2010	Reforestamos Mexico	1,000
2010	2010	Reforestamos Mexico	650
2010	2010	Pemex	40
2010	2010	U&WE	1,000
2010	2010	Save the Planet	100
2010	2010	Save the Planet	500
2010	2010	Save the planet	387

[Escriba aquí]

2010	2010	HSBC	1,500
2010	2010	Proactive strategy	10
2010	2010	PEMEX	40
2010	2010	FMCN	128
2010	2010	FUNCITREE NINA	80
2010	2010	ADVENTURE TRAVEL WORLD SUMMIT	206
2010	2010	Blue Green	839
2010	2010	POLICYMIX-NINA2	190
2010	2010	Source Sustainable Supply Chain Ltd	1
2010	2010	Presidencia de la República	2,227
2010	2010	U&WE	1,000
2010	2010	U&WE	1,099
2010	2010	U&WE	8,067
2010	2010	Presidencia de la Republica	2,103
2010	2010	PRONATURA	1,010
2010	2010	PRONATURA	600
2010	2010	U&WE	989
2010	2010	U&WE	261
2010	2010	U&WE	310
2010	2010	Source Sustainable Supply Chain Ltd	15
2010	2010	Clevel	200
2010	2010	Expo Transporte ANPACT 2013	995
2010	2010	CLevel	200
2010	2010	Richard and Celia Walker	140
<b>Total 2010</b>			<b>28,889</b>
2011	2011	Save the Planet	150

[Escriba aquí]

2011	2011	U&WE	1,000
2011	2011	FMNC	230
<b>Total 2011</b>			<b>1,380</b>
2012	2012	Green My Room	4,000
2012	2012	PEMEX	40
2012	2012	U&WE	800
2012	2012	Arneses Electrónicos (PRONATURA)	38
2012	2012	CeroCO2 (ECODES)	3,500
2012	2012	Arneses Electrónicos (PRONATURA)	13
2012	2012	Fundación Produce Puebla	120
2012	2012	PEMEX	55
2012	2012	Rabobank	350
2012	2012	Santiago Enríquez	10
2012	2012	Clima y Eficiencia	3
2012	2012	Clima y Eficiencia	1
2012	2012	Red MOCAF A. C.	15
2012	2012	Fundación Produce Tabasco	70
<b>Total 2012</b>			<b>9,015</b>
2005	2013	LLOYD	76
2005	2013	Toby & Meg Wedding	25
2013	2013	Programa de Liderazgo del Sistema Arrecife Mesoamericano (SUSTENTA)	9
2013	2013	U&WE	750
2013	2013	Programa de Liderazgo del Sistema Arrecife Mesoamericano (SUSTENTA)	31
2013	2013	Clima y Eficiencia	4
2013	2013	Foro de Turismo, Sostenibilidad y Cambio Climático en Centro América (SUSTENTA)	20
2013	2013	Clima y Eficiencia	5

[Escriba aquí]

2013	2013	PEMEX	40
2013	2013	Clima y Eficiencia	20
2013	2013	Mundo Sustentable A.C.	20
2013	2013	U&WE	1,600
2013	2013	Promotora Ambiental, S.A.B. de C.V.	238
2013	2013	Clima y Eficiencia	4
2013	2013	Expo Transporte ANPACT 2013.	720
2013	2013	FunciTree Nina	60
2013	2013	U&WE	1,727
2013	2013	U&WE	1,501
2013	2013	Clima y Eficiencia	20
2013	2013	Rabobank	352
2013	2013	Empresas del Comité Organizador del Foro de Sustentabilidad 2013	72
2013	2013	Pronatura	1,510
2013	2013	U&WE (Absolut Vodka)	1,328
2013	2013	U&WE	820
2013	2013	Lourdes Adriana López Moreno (Acción Navideña)	4
2013	2013	María Isabel Ortiz Mantilla (Acción Navideña)	4
2013	2013	Raymundo Tamayo (Acción Navideña)	4
2013	2013	Ana Lorena Gudiño Valdez (Acción Navideña)	4
2013	2013	Tomás Enriquez Palancares (Acción Navideña)	4
2013	2013	Natalia Enriquez Palancares (Acción Navideña)	4
2013	2013	Ben Twist	29
2013	2013	Ana Sofía Navarro Aceves	5
2013	2013	Arturo Balderas Torres	30
<b>Sales (PVCs, vintage 2013)</b>			<b>11,040</b>

[Escriba aquí]

Total Sales (PVCs, all vintages)			479,053
2014	2014	Green my Room	50
2014	2014	U&WE (A)	840
2014	2014	ECODES	2,000
2014	2014	NINA Policymix	285
2014	2014	IUCN	5,070
2014	2014	U&WE (B)	500
2014	2014	U&WE ( C)	620
2014	2014	U&WE (D)	800
2014	2014	U&WE ( E)	510
2014	2014	ABC Aerolíneas S.A. de C.V. (1)	308
2014	2014	Climate Stewards	1,500
2014	2014	ABC Aerolíneas S.A. de C.V. (2)	270
2014	2014	Counter Culture Coffee	1,341
2014	2014	CLevel	400
2014	2014	ABC Aerolíneas S.A. de C.V. (3)	388
2014	2014	Green Momentum	13
2014	2014	MMS	7
2014	2014	Clima y Eficiencia (A)	10
2014	2014	Clima y Eficiencia (B)	23
2014	2014	Natalia Enriquez Palancares	5
2014	2014	Tomás Enriquez Palancares	5
2014	2014	Clima y Eficiencia (C)	10
2014	2014	Clima y Eficiencia (D)	4
2014	2014	Explora, ecoturismo y aventura S.A de C.V.	16
2014	2014	Ben Twist	15

[Escriba aquí]



2014	2014	CLevel	501
<b>Sales (PVCs, vintage 2014)</b>			<b>15,491</b>
<b>Total Sales (PVCs, all vintages)</b>			<b>494,544</b>
2015	2015	Green my Room	120
2015	2015	U&We - Absolut Vodka (A )	1,501
2015	2015	U&We (A)	648
2015	2015	FEMEXFUT	102
2015	2015	Huella Azul	540
2015	2015	U&We (B)	1,100
2015	2015	U&We ( C)	500
2015	2015	Green my Room	275
2015	2015	Sustentur	20
2015	2015	Presidencia	1,647
2015	2015	U&WE 2014 (F)	1,501
2015	2015	U&We (D)	1,698
<b>Sales (PVCs, vintage 2015)</b>			<b>9,652</b>
<b>Total Sales (PVCs all vintages)</b>			<b>504,196</b>
2016	2016	Absolut Vodka	2559
2016	2016	Climate Stewards	3183
2016	2016	ZeroMission	2246
2016	2016	Vicente Ferreyra Acosta	2
2016	2016	Vicente Ferreyra Acosta	20
2016	2016	FAM Trip Carbono Neutral	5
2016	2016	Interjet	540
2016	2016	FIL Guadalajara	178
2016	2016	Interjet	540
2016	2016	Grupo Ferrer Internacional	2

[Escriba aquí]

2016	2016	Corporación Hotelera Hispano Mexicana	30
2016	2016	Distrito Global	150
2016	2016	Camilo Arias Martelo	1
2016	2016	Benjamin Twist	20
2016	2016	Interjet	540
2016	2016	GreenMomentum	15
2016	2016	Estafeta	1132
2016	2016	Volvo Trucks	12
2016	2016	Interjet	48
2016	2016	CONAFOR	35
2016	2016	SENER	9
2016	2016	Interjet	88
2016	2016	Oikocredit Ecumenical Development Co-operative Society UA	120
2016	2016	Plataforma Mexicana de Carbono S de RL de CV	145
2016	2016	Plataforma Mexicana de Carbono S de RL de CV	5
2016	2016	Plataforma Mexicana de Carbono S de RL de CV	2
2016	2016	Plataforma Mexicana de Carbono S de RL de CV	1
2016	2016	Green My Room	300
2016	2016	Impact 0	6
2016	2016	ZeroMission	1501
2016	2016	CLevel	200
2016	2016	AMBIO	800
		<b>Sales (PVCs, vintage 2016)</b>	<b>14,435</b>
		<b>Ventas totales (PVCs, todos los vintages)</b>	<b>518,631</b>
2017	2017	Green my room	300
2017	2017	Secretaría de Energía	6
2017	2017	Plasgaard Industri México, S. de R.L. de C.V.	145

[Escriba aquí]

2017	2017	ABC Aerolíneas S.A. de C.V. (Interjet)	185
2017	2017	FIL Guadalajara,	10
2017	2017	FIL Niños	113
2017	2017	Pabellón Infinitum	1
2017	2017	Zeromission	1501
2017	2017	Tianguis Turístico de México Acapulco 2017 <i>First emission</i>	1863
2017	2017	Zeromission	2715
2017	2017	Sustainable and Social Tourism Summit	70
2017	2017	ABC Aerolíneas S.A. de C.V. (Interjet)	321
2017	2017	Secretaría de Energía	2
2017	2017	Festival Bravo	51
2017	2017	Zeromission	850
2017	2017	Paraíso BB México S. de R.L. de C.V.	1310
2017	2017	Secretaría de Energía	1
2017	2017	ABC Aerolíneas S.A. de C.V. (Interjet)	386
2017	2017	Zeromission	3461
2017	2017	Community Tours Sian Kaan	42
2017	2017	Secretaría de Energía	1
2017	2017	Climate Partner	2000
2017	2017	Vehículos Líquidos Financieros, S.A.P.I. de C.V. SOFOM ENR	16
2017	2017	Counter Culture Coffee	1063
2017	2017	MARTierra an Hábitas   Rise Earth Preservation	8
2017	2017	Climate Stewards	1501
2017	2017	Festival Comunité	40
		<b>Sales (PVCs, vintage 2017)</b>	<b>17,962</b>
		<b>Total Sales (PVCs, all vintages)</b>	<b>536,593</b>

[Escriba aquí]

2018	2018	Haper Compañía S. de R.L. de C.V.	839
2018	2018	International American School of Cancun A.C.	2
2018	2018	Zeromission	5000
2018	2018	Los asistentes del Sustainable & Social Tourism Summit	130
2018	2018	Mar y Tierra- Hábitas	20
2018	2018	Art With Me-Hábitas	20
2018	2018	M. en C. Olmo Torres-Talamante	9
2018	2018	Zeromission	1000
2018	2018	FIL Guadalajara	112
2018	2018	BCO Tucuncun S de RL de CV (Hotel Occidental Tucuncun)	6
2018	2018	BCO Kukulcan S de RL de CV (Occidental Costa Cancún)	20
2018	2018	Héctor Reyes Flores	8
2018	2018	Sustentur	10
2018	2018	Randi Shawn Stellar	317
2018	2018	Ben Twist	19
2018	2018	Carnaval de Bahidorá (Distrito Global )	80
2018	2018	Zeromission	2,600
2018	2018	Leobardo Palacios Antonio	399
2018	2018	Zeromission	1000
2018	2018	The Oceanic Global Foundation & Hábitas	20
2018	2018	Thayer los Cabos Arrendador, S De RL de CV	1298
2018	2018	Procuraduría Federal de Protección al Ambiente	101
2018	2018	Unión de Crédito Concreces SA De CV	59
2018	2018	Tianguis Tutístico de México Acapulco 2017(segunda emisión)	669
		<b>Sales (PVCs, vintage 2018)</b>	<b>13,738</b>
		<b>Ventas totales (PVCs, todos los vintage)</b>	<b>550,331</b>
2019	2019	Leobardo Palacios Antonio	269

[Escriba aquí]

2019	2019	Climate Stewards	1640
2019	2019	PROFEPA	1
2019	2019	Zeromission	2600
2019	2019	HABITAS Tulum	100
2019	2019	Gaser de México SA de CV	10
2019	2019	Salinas del Pacífico SA de CV	1058
2019	2019	Occidental Nuevo Vallarta	15
2019	2019	Green My Room	466
2019	2019	Barceló Puerto Vallarta	9
2019	2019	Oportunidades para Emprendedores SAPI de CV, SOFOM ENR	82
2019	2019	Community Tours Sian Kaan	506
2019	2019	Sustentur	30
2019	2019	Matías García Romero	35
2019	2019	Ben Twist	18
2019	2019	Carnaval de Bahidorrá (Distrito Global )	110
2019	2019	Asociación Nacional de Tiendas de Autoservicio y Departamentales AC ANTAD	104
2019	2019	Alexsandrovich Andrade Tapia	19
2019	2019	Unión de Crédito General SA de CV	33
2019	2019	Zeromission	20,028
2019	2019	Desarrolladora MAM de Centro América	2,071
2019	2019	Festival Art With Me*GNP	432
2019	2019	Art With Me-Habitas	40
2019	2019	Zeromission	5,001
2019	2019	Absolut México	13
2019	2019	Fondo Procuencia Valle de Bravo AC	2
2019	2019	ION Financiera SAPI de CV SOFOM ER	50
2019	2019	Natura Distribuidora de México	6

[Escriba aquí]

2019	2019	Raúl Arturo González Mendoza y Coopropietarios	19
2019	2019	Marina La Playita SA de CV	44
2019	2019	BCO Kukulcan S. de R.L. de C.V. (Occidental Costa Cancún)	40
2019	2019	BCO Tucanun S. de R.L. de C.V. (Hotel Occidental Tucanun)	40
2019	2019	José Alberto Vargas Vara	108
2019	2019	Grupo Bimbo	8
2019	2019	Zeromission	19,249
2019	2019	Zeromission	5,000
2019	2019	Zeromission	751
2019	2019	Franziska Kleinmagd	17
2019	2019	Luis Alejandro Montes de Oca	19
2019	2019	Asociación de Relaciones Públicas del Caribe Mexicano AC	17
2019	2019	David Hernández Cruz	40
2019	2019	Edwin Chavez Villanueva	40
2019	2019	Enrique Hernández Olvera	40
2019	2019	Gabino Hernández Olvera	40
2019	2019	Humberto Emiliano Chávez Islas	40
2019	2019	Iván Calderón Salazar	40
2019	2019	Julio César Hernández Cruz	40
2019	2019	Moisés Rosas Bonilla	40
2019	2019	Rosalio Rosas Bonilla	40
2019	2019	Zeromission	5,000
2019	2019	Unión de Crédito Concreces SA de CV	50
2019	2019	Be Tulum	216
2019	2019	Nomade Tulum	216
		<b>Sales (PVCs, vintage 2019)</b>	<b>65,902</b>
		<b>Ventas totales (PVCs, todos los vintage)</b>	<b>616,233</b>

Annex 5. Species collected in the monitoring of the areas registered in 2019

[Escriba aquí]

NB	Common Name	Common name in english	Scientific Name <sup>12</sup>	IUCN 2019-1	NOM-059-SEMARNAT 2010	CITES 2019	USES
1	Aguacatillo	Avocado	<i>Persea americana</i>	Least Concern (LC)			Native, Medicinal, Food
2	Aguacatillo	Avocado	<i>Persea schiedeana</i>	Endangered (EN)			Native, food
3	Caobilla	Mexican Mahogany	<i>Swietenia humilis</i>	Endangered (EN)		Apéndice II	Native. wood, medicinal, honey
4	Cedro	Cedar	<i>Cedrela odorata</i>	Vulnerable (VU)	Under special protection (Pr)	Apendix III	Native, wood
5	Granadillo	Passion fruit	<i>Dalbergia granadillo</i>	Critically Endangered (CR)	In danger of Extinction (P)	Apendix II	Endemic, wood, musical instruments
6	Granadillo	Passion Fruit	<i>Randia aculeata</i>	Least Concern (LC)			Native, wood, firewood
7	Ciprés	Cypress	<i>Cupressus lusitanica</i>	Least Concern (LC)	Under special protection (Pr)		Native, Wood
8	Roble	Oak Tree	<i>Quercus skinneri</i>	Vulnerable (VU)			Native, firewood and charcoal
9	Roble	Oak Tree	<i>Quercus crassifolia</i>	Least Concern (LC)			Endémic, use of charcoal, fences, platfoms, paper celullose, road pillar
10	Roble	Oak Tree	<i>Quercus glabrescens</i>	Least Concern (LC)			Endémic, firewood, charcoal
11	Pino	Pine	<i>Pinus oocarpa</i>	Least Concern (LC)			Introduced. Use for the comercial production of Wood for paper industry
12	Chiquinib	Oak	<i>Querchus laurina</i>	Least Concern (LC)			Endemic, wood (tools, construction), paper pulp, musical instruments
13	Chalum	Ice Cream Bean Tree	<i>Inga punctata</i>	Least Concern (LC)			Native, firewood, poles, nitrogen fixation
14	Chalum	Ice Cream Bean Tree	<i>Inga vera</i>	Least Concern (LC)			Native, firewood, wood, medicinal, honey (flowers with nectar)
15	Maculis	Rosy Trumpet Tree	<i>Tabebuia rosea</i>	Least Concern (LC)			Native, firewood, charcoal, wood, musical instruments

<sup>12</sup> Es necesario verificar en campo la especie para el caso del roble, aguacatillo y granadillo.

[Escriba aquí]

16	Guanacastle	Elephant ear tree	Enterolobium cyclocarpum	Least Concern (LC)			Native, handcrafts, kitchen instruments, wood, Fodder, tanning, medicinal
17	Liquidámbar	American sweetgum	Liquidambar styraciflua	Least Concern (LC)			Native, medicinal, food
18	Guachipilin	American umbrella	Diphysa robinoides	Least Concern (LC)			Native, wood, firewood, charcoal
19	Taray	kidneywood tree	Eysenhardtia adenostylis				Native, wood, firewood, charcoal
20	Nance	Golden spoon	Byrsonima crassifolia	Least Concern (LC)			Native, medicinal, food
21	Mulato	Cooperwood	Bursera simaruba	Least Concern (LC)			Native, medicinal, living fences
22	Caspirola	Guamo	Inga oerstediana				Native, firewood
23	Matabuey	Lilac Tree	Lonchocarpus sp.				Native, firewood
24	Guayaba	Guava	Psidium guajava	Least Concern (LC)			Native, medicinal, food

Fuente: <http://enciclovida.mx/>

[Escriba aquí]